



Second Chance City Worksession

11/14/18

AGENDA

- | | | |
|------|--|--|
| I. | Introduction | Kaki Dimock |
| II. | Data Review | Neal Goodloe |
| III. | Promising Practices | |
| | a. Coordinating across agencies: <i>Re-Entry Council</i> | Sue Moffett |
| | b. Connecting to work: <i>Coming Home to Work</i> | Nadine Brooks |
| | c. Pre-release planning: <i>Jail Resource Room</i> | Martin Kumer |
| | d. Determining risk: <i>evidence-based risk assessments</i> | D.J. Cooke |
| | e. Connecting to support & services: <i>peer navigation</i> | Cyndi Richardson Herb Dickerson Eddie Harris |
| | f. Connecting to support & Services: <i>Homecoming Guide</i> | Charlene Green |
| | g. Providing financial support: <i>The Fountain Fund</i> | Carl Brown |
| IV. | Gaps, Needs, Plans | Kaki Dimock |

This page intentionally left blank

Albemarle-Charlottesville ACRJ Reentry Data Summary

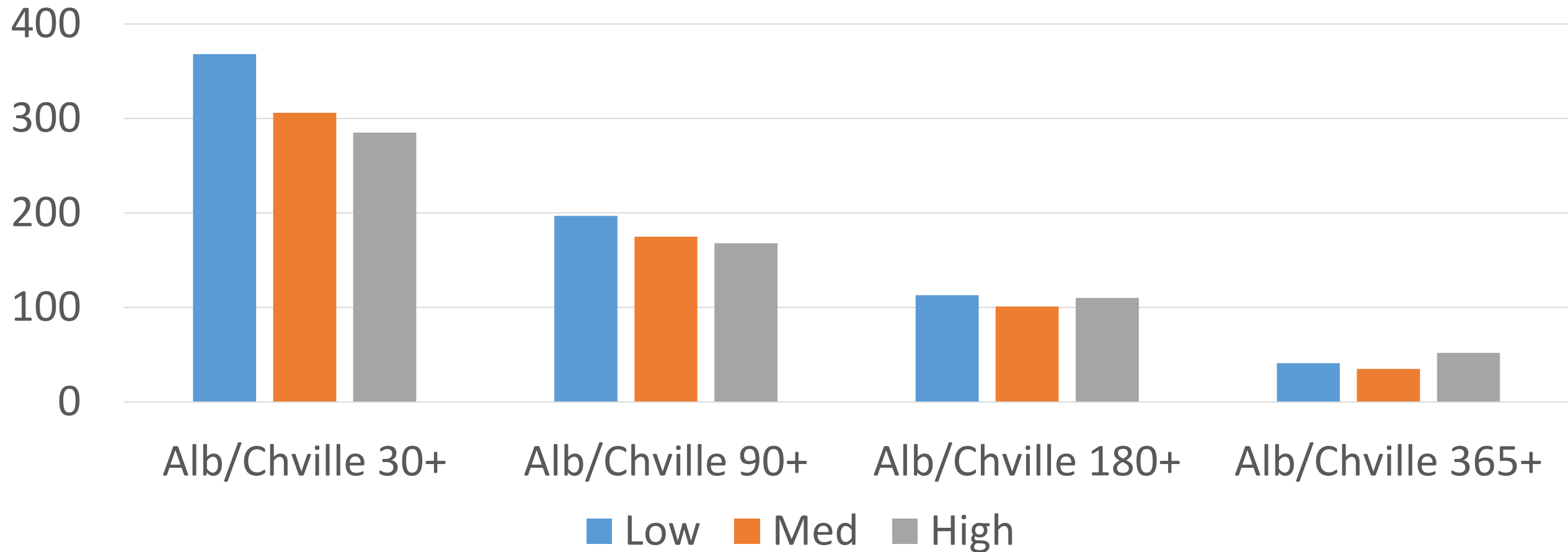
Charlottesville City Council Work Session

November 14, 2018

The size of the local reentry population dropped 17% from 2012 through 2016.

- During 2016, a total of 337 individuals returned to the community from ACRJ, having served more than 30 days on bookings in Charlottesville and Albemarle County.
- 46% of that reentry population served more than 90 days.
- 24% served more than 180 days.
- 6% served more than 365 days.

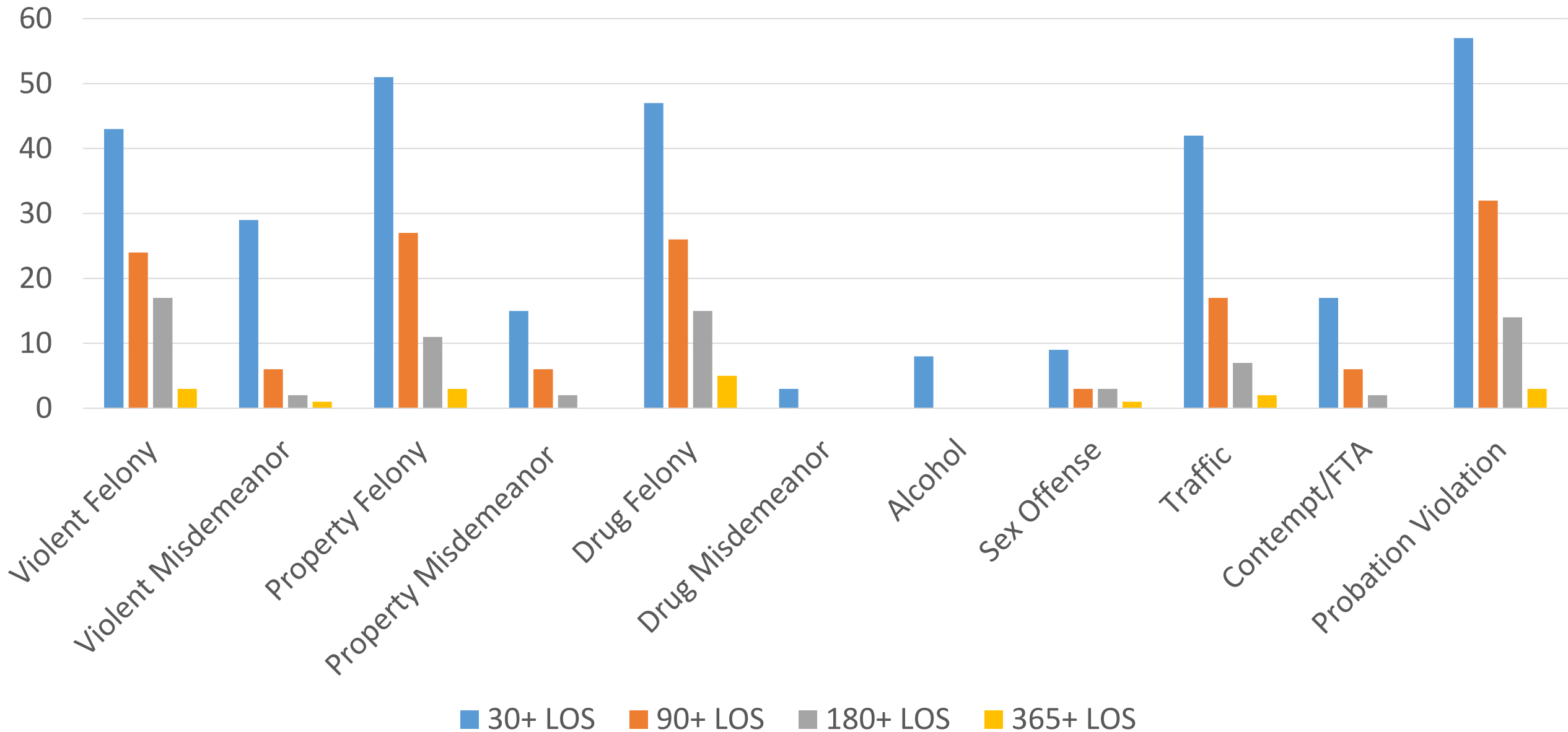
38% of inmates held longer than 30 days at ACRJ in 2014-15 were at low risk to recidivate (8-10% likelihood over two years following release).



Most prevalent criminogenic needs of the reentry population include the following:

- 50% have a highly probable need for substance abuse treatment.
- 32% have a highly probable need for cognitive-behavioral programming.
- 31% meet the screening criteria for serious mental illness (48% of women).

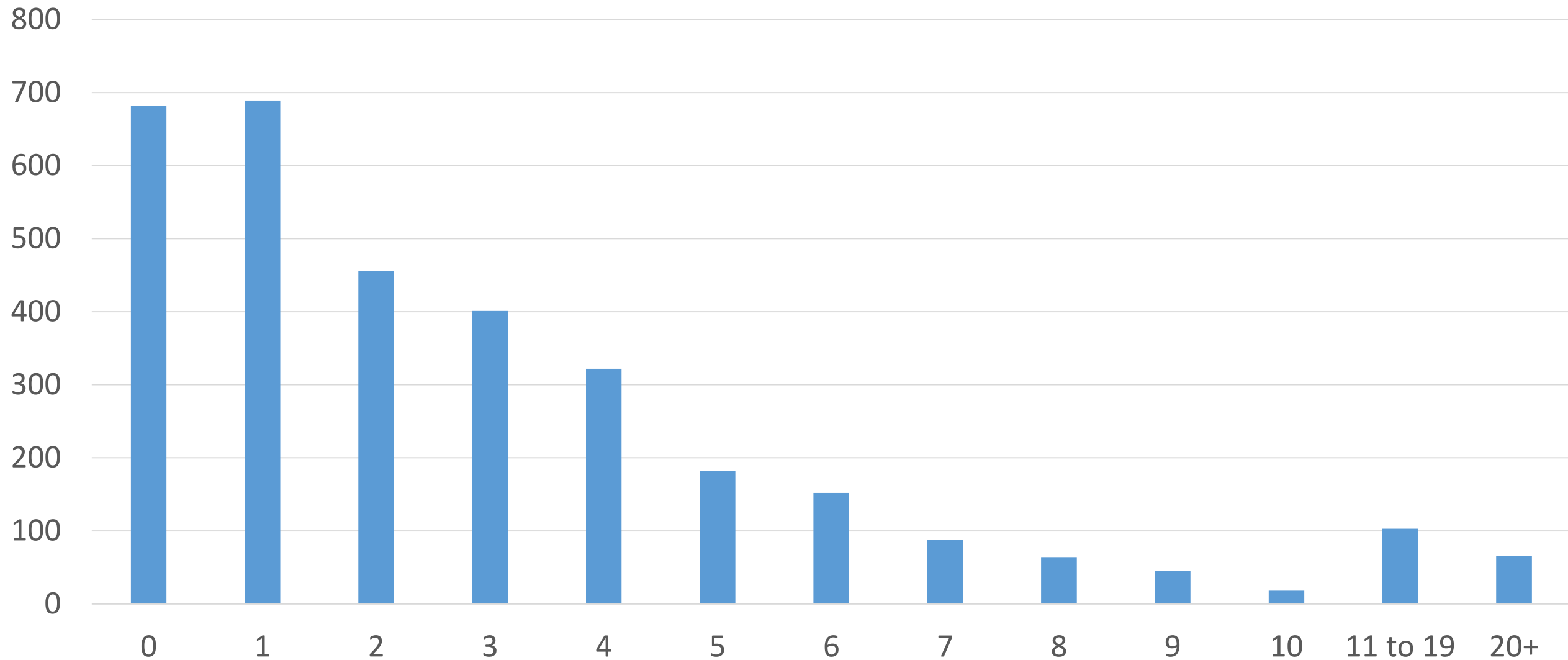
78% of bookings related to the local reentry population are for non-violent offenses.



ACRJ Reentry Population Characteristics:

- Average number of prior arrests: **12**
- **36%** had a prior prison term (658 out of 1807).
- **51%** had a prior jail term (929 out of 1807).
- **69%** had previously been on probation (1239 out of 1807).
- **50%** had a prior probation revocation (899 out of 1807).
- **34%** were on probation at the time of their arrest (614 out of 1807).

79% of those serving a sentence of 30+ days return to custody for another 30+ day sentence within a 5-year window (2012-16). 22% return five times or more.



Prepared by:

Neal S. Goodloe, MPA

Criminal Justice Planner

Jefferson Area Community Criminal Justice Board