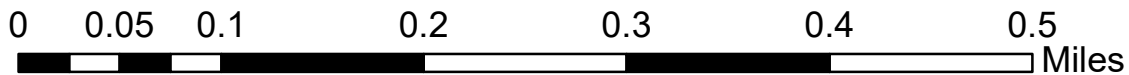
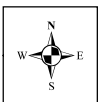
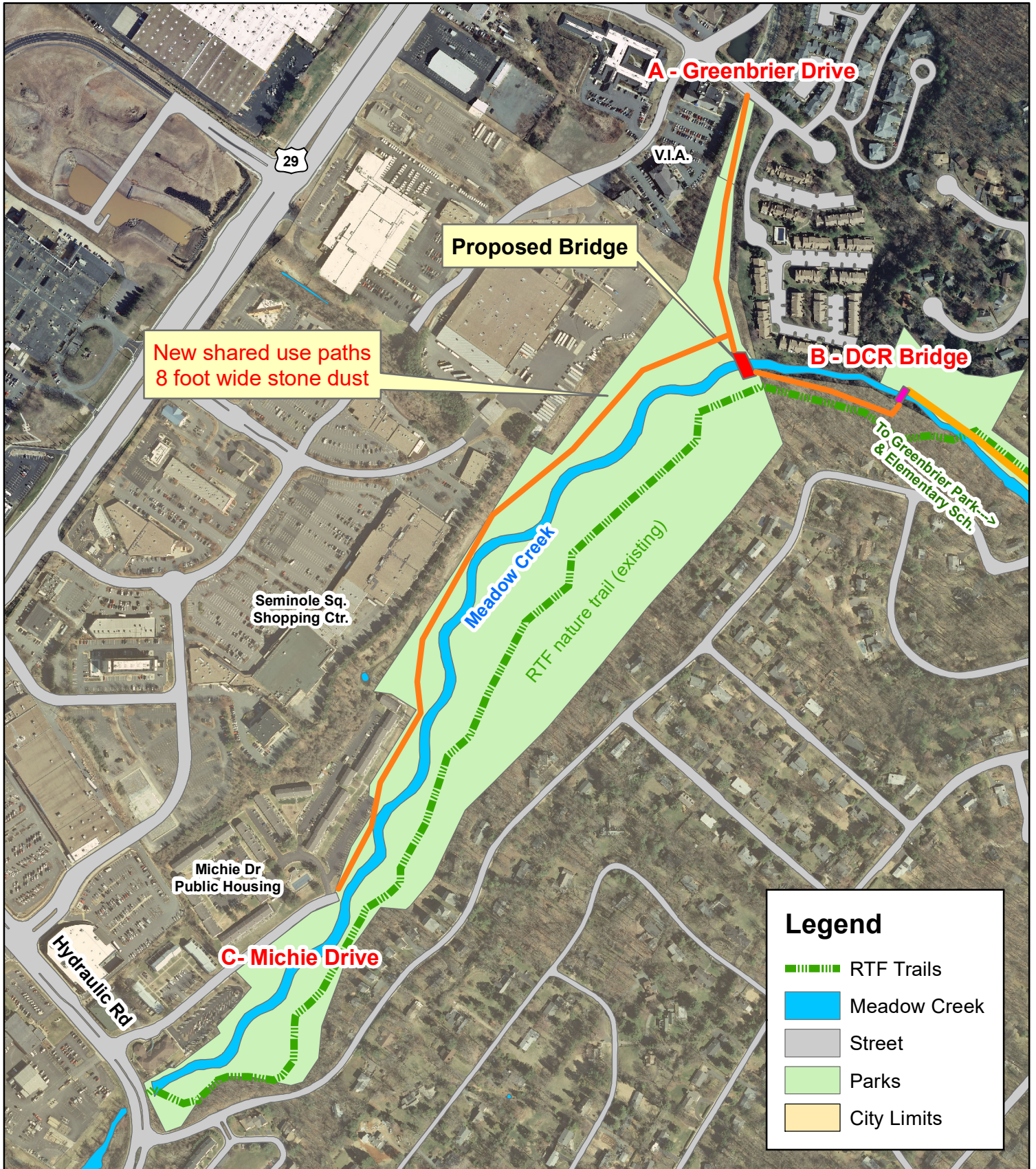


# Meadow Creek Bridge and Trail Alignment Graphic



The geographic data layers produced by the City of Charlottesville are provided as a public resource. The City makes no warranties, expressed or implied, concerning the accuracy, completeness or suitability of this data, and it should not be construed or used as a legal description. The information displayed is a compilation of records, information, and data obtained from various sources, and the City is not responsible for it's accuracy or how current it may be.

Every reasonable effort is made to ensure the accuracy and completeness of the data.

Pursuant to Section 54.1-402 of the Code of Virginia, any determination of topography or contours, or any depiction of physical improvements, property lines or boundaries is for general information only and shall not be used for the design, modification or construction of improvements to real property or for flood plain determination.