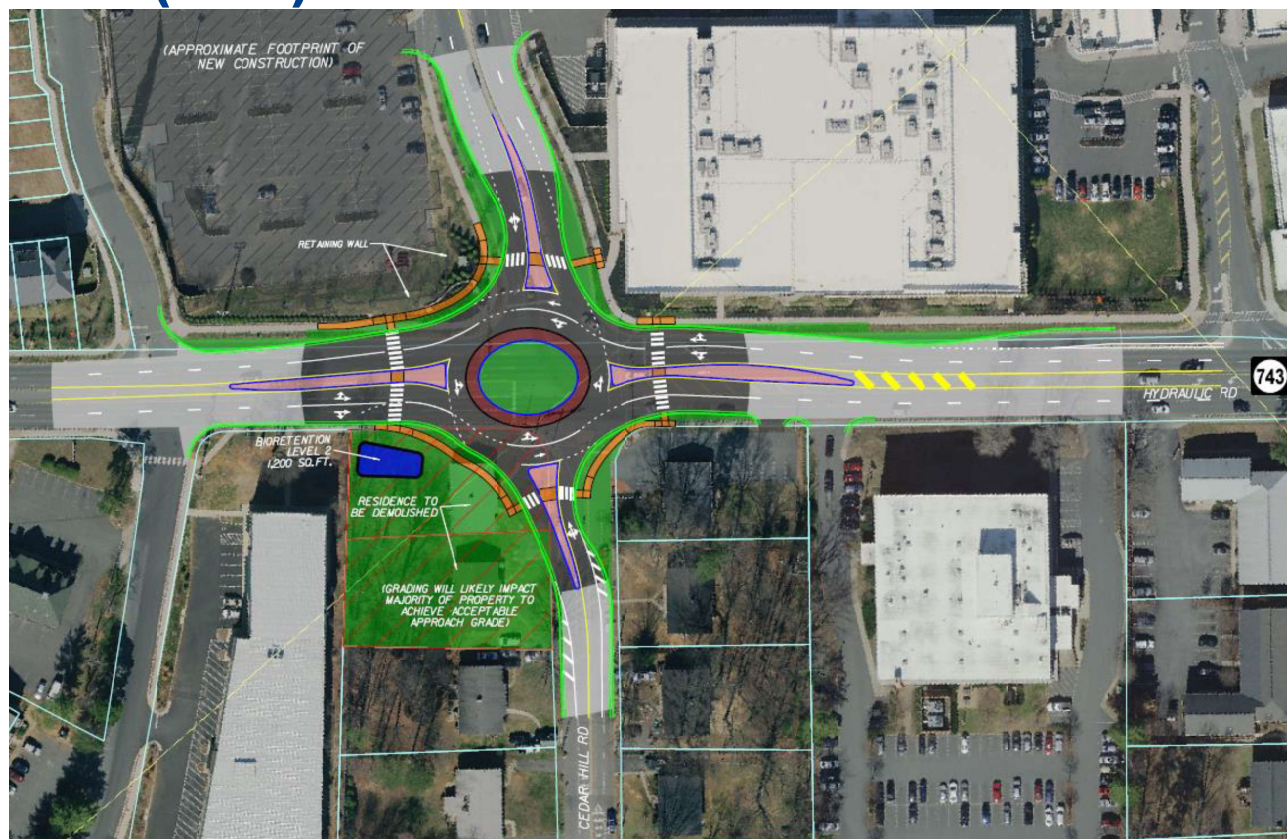
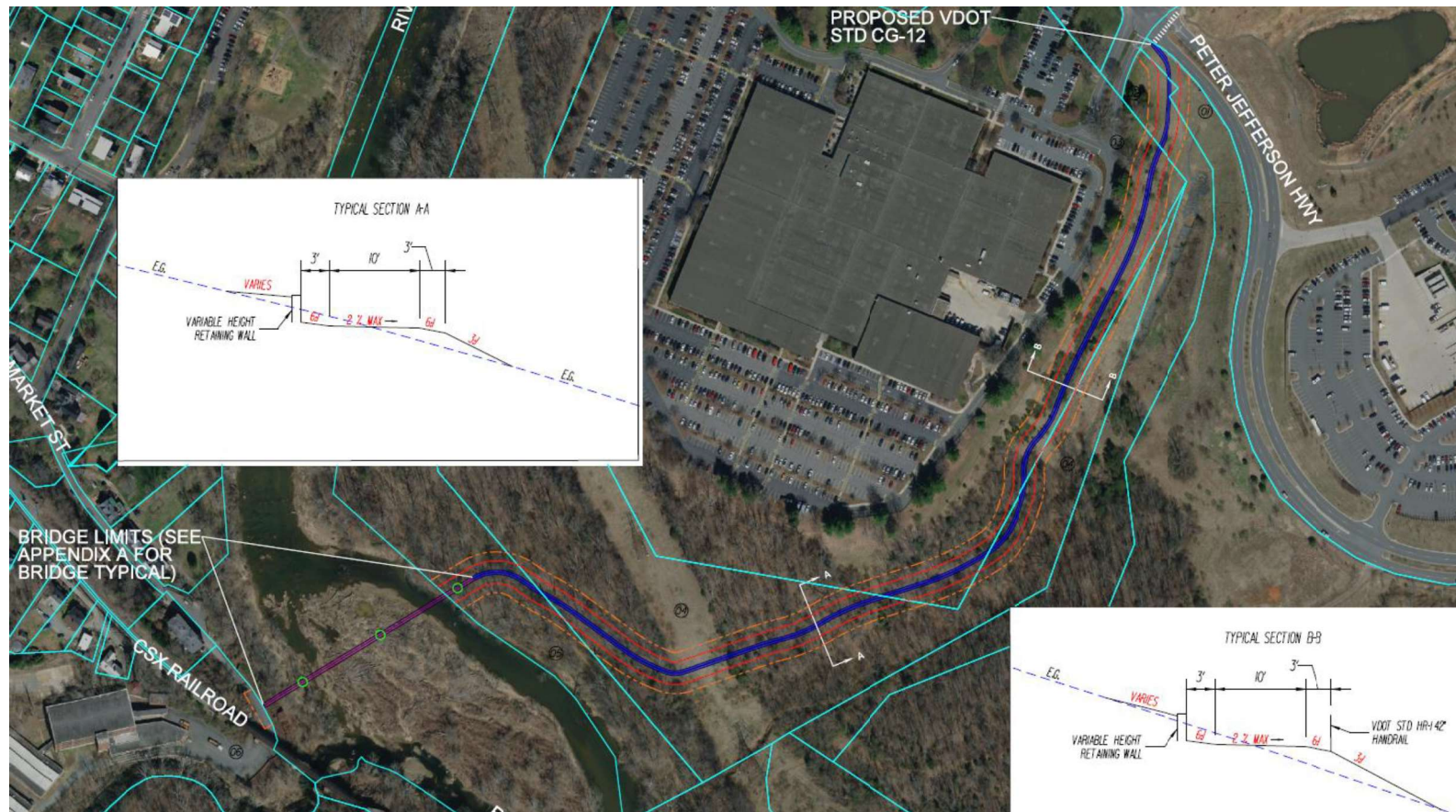


# Hydraulic Rd (743) / District Ave Roundabout – Albe./C'ville



**Status: Design Revision**

# Rivanna River Bike and Pedestrian Crossing – Albemarle



Status: 2<sup>nd</sup> Review

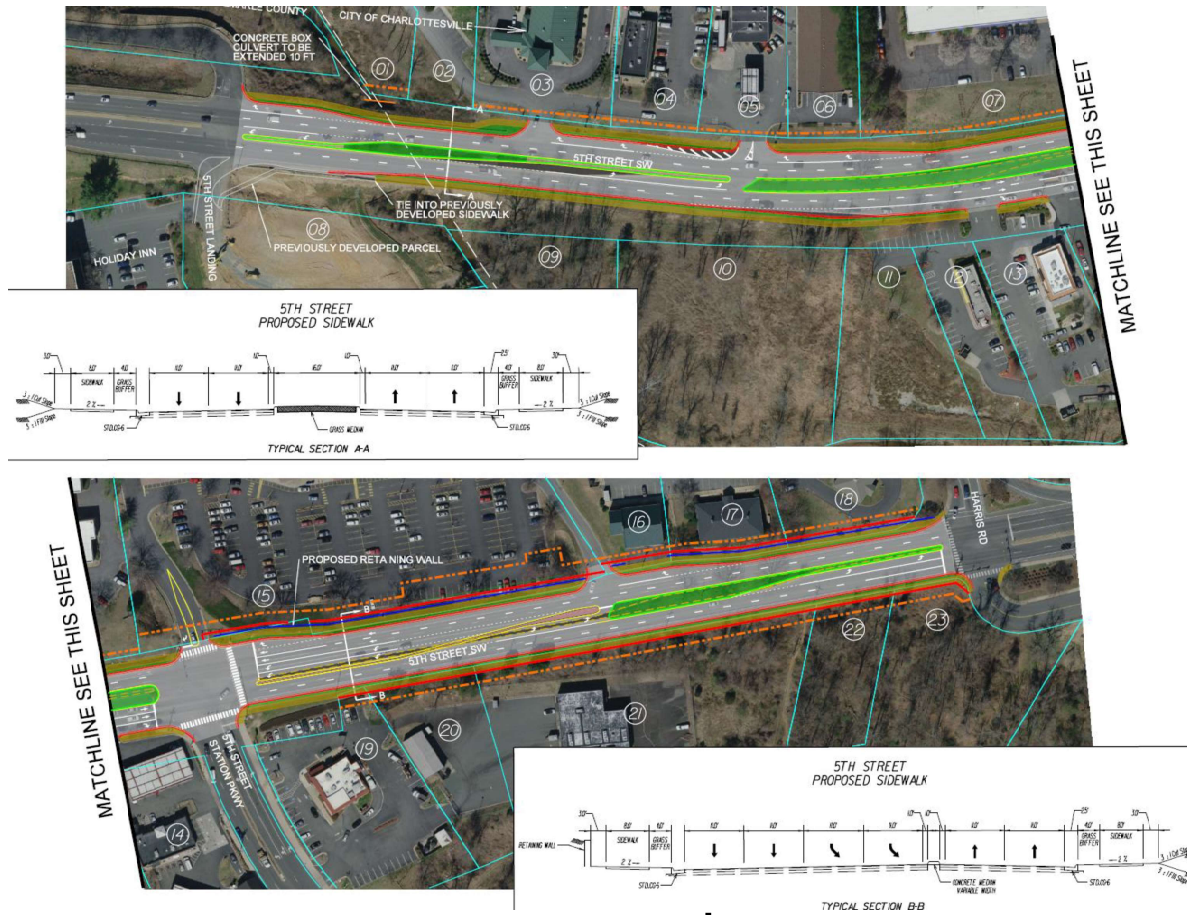


# Avon Street Multi-Modal Improvements – Albe/C'ville



Status: Design Revision

# 5<sup>th</sup> Street Multi-Modal Improvements- Harris Rd to Holiday Inn



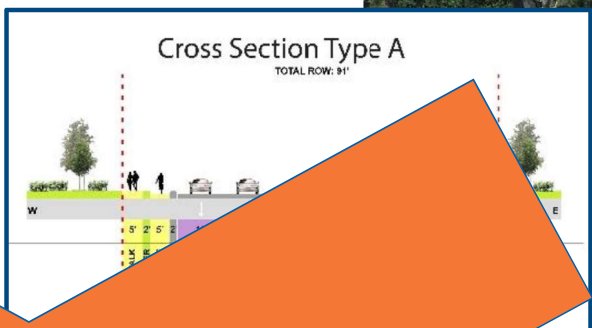
**Status: 2<sup>nd</sup> Review**



# 5<sup>th</sup> Street Multi-Modal Imp. (Harris to Cherry) – Charlottesville

Northern Section

Previous Funded Project



Southern Section



**Status: Cancelled?**

