

Checking in with CHO



SEPTEMBER 2022



BY MELINDA CRAWFORD, CHIEF EXECUTIVE OFFICER



Who writes CHO's story?

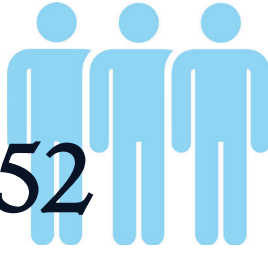
CHO is operated by the Charlottesville-Albemarle Airport Authority, and this leadership was established pursuant to Chapter 390 of the Acts of the 1984 General Assembly and as amended in 1995 & 2003.



Advisory Joint Airport
Commission



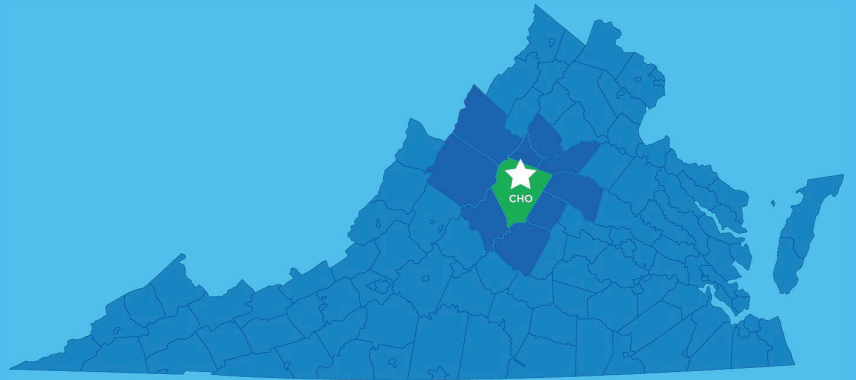
Airport Authority
Board



752,452

Total Passengers Served in FY-19

ENDING 6/30/19



The Seats Tell the Story

Pre-Pandemic

CHO's passenger traffic had grown 116% from 2009 to 2019. CHO was serving 2,300-2,500 daily passengers.

Early Pandemic

During the height of the pandemic, CHO served 40-200 daily passengers.

Mid-Pandemic

Traffic is returning & CHO is seeing more leisure travelers while serving 1,200-1,600 daily passengers.

2019		DAILY AVG	
Airline	Market	Depts	Seats
American	CLT	8	481
American	ORD	2	100
American	LGA	2	88
American	PHL	2	100
Delta	ATL	5	310
Delta	LGA	2	100
United	IAD	2	100
United	ORD	2	100
Total		25	1379

JUNE 2020		DAILY AVG	
Airline	Market	Depts	Seats
American	CLT	3	191
Delta	ATL	1	50
United	IAD	1	50
Total		5	291

JUNE 2021		DAILY AVG	
Airline	Market	Depts	Seats
American	CLT	6	323
American	ORD		
American	LGA		
American	PHL	2	93
Delta	ATL	3	218
Delta	LGA		
United	IAD	2	93
United	ORD	1	50
Total		14	777



How has CHO's Air Service Changed Since 2019?



DOWN 19% | A DIFFERENCE OF 266 SEATS

JUNE 2019		DAILY PEAK DAY	
Airline	Market	Depts	Seats
American	CLT	8	481
American	ORD	2	100
American	LGA	2	88
American	PHL	2	100
Delta	ATL	5	310
Delta	LGA	2	100
United	IAD	2	100
United	ORD	2	100
Total		25	1379

JUNE 27, 2022		DAILY PEAK DAY	
Airline	Market	Depts	Seats
American	CLT	7	391
American	ORD		
American	LGA	2	141
American	PHL		
Delta	ATL	3	210
Delta	LGA	3	221
United	IAD	3	150
United	ORD		
Total		18	1113

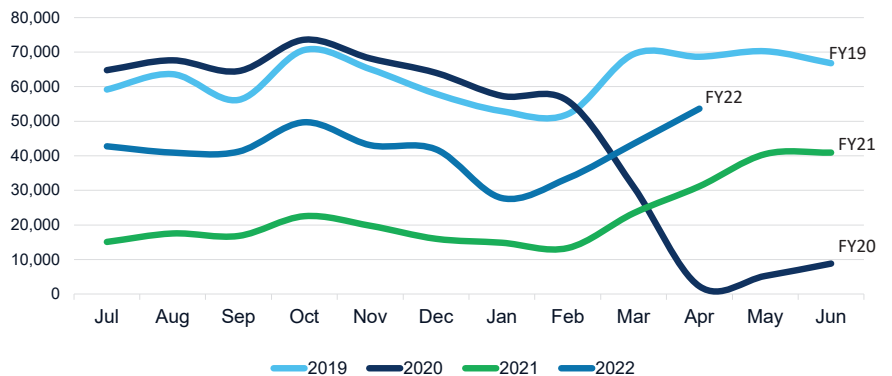


Annual Total Passengers

Year	Total Passengers	% Change
FY18	696,512	
FY19	752,452	8%
FY20	563,131	-25%
FY21	271,950	-52%
FY22	508,000 est.	87%

Annual Total Passengers FY19 – FY22

CHO'S FISCAL YEAR IS JULY 1 – JUNE 30



CHO's Operating Budget



	<i>Actual</i>	<i>Actual</i>	<i>Projected</i>	<i>Budget</i>
	FY 2020	FY 2021	FY 2022	FY 2023
REVENUES				
Terminal	\$2,336,668	\$1,494,216	\$1,943,063	\$2,364,153
Airfield	\$1,537,272	\$1,295,744	\$1,405,580	\$1,722,503
Parking	\$4,704,144	\$1,414,966	\$2,615,610	\$3,604,667
Indirect	\$100,001	\$46,093	\$44,084	\$87,367
Total Revenues	\$8,678,086	\$4,251,019	\$6,008,337	\$7,778,690
EXPENSES				
Terminal	\$2,662,623	\$2,241,806	\$2,427,155	\$2,802,892
Airfield	\$1,537,272	\$1,617,628	\$1,572,788	\$1,998,488
Parking	\$2,148,915	\$856,231	\$1,703,829	\$2,330,786
Indirect	\$2,267,432	\$1,600,153	\$1,545,881	\$2,229,142
Total Expenses	\$8,616,242	\$6,315,818	\$7,249,653	\$9,361,308
Net Income/Loss	\$61,844	\$(2,064,799)	\$(1,241,316)	\$(1,582,618)

Who Takes Care of CHO's Passengers?

50 full-time and part-time Airport Authority employees



FOOD/BEVERAGE/RETAIL PROVIDER

Tailwind CHO LLC



FBO PROVIDER

Signature Flight Support

RENTAL CAR PROVIDERS



OTHER MEMBERS OF CHO'S GA COMMUNITY





What is CHO's Economic Impact to the Region?



The Virginia Department of Aviation's "2017 Economic Impact Study" indicated that CHO contributes to the region a Total Annual Economic Impact of:



2,239

Jobs



\$110M

in Wages

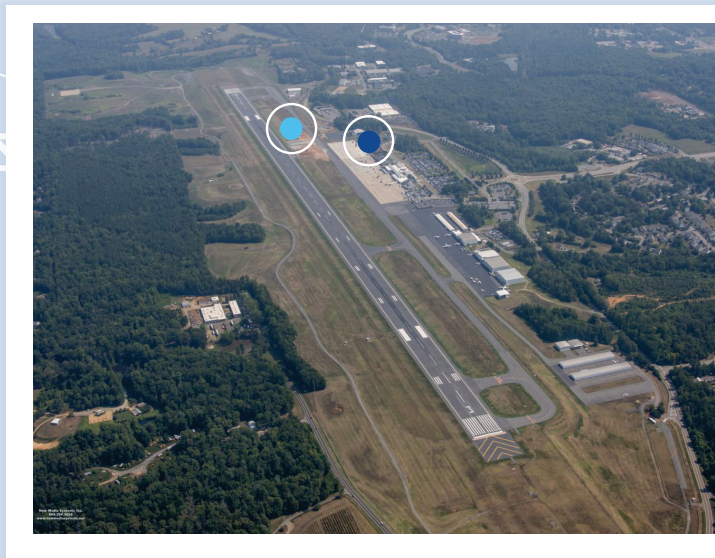
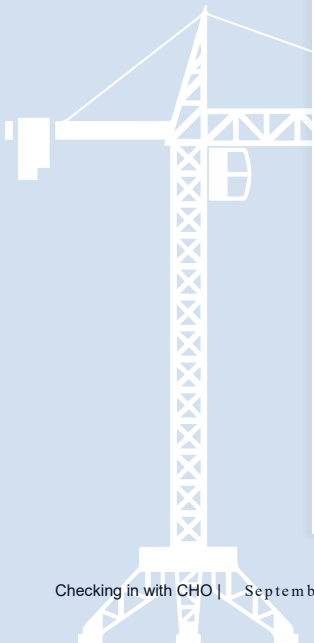


\$310M

in Economic Activity

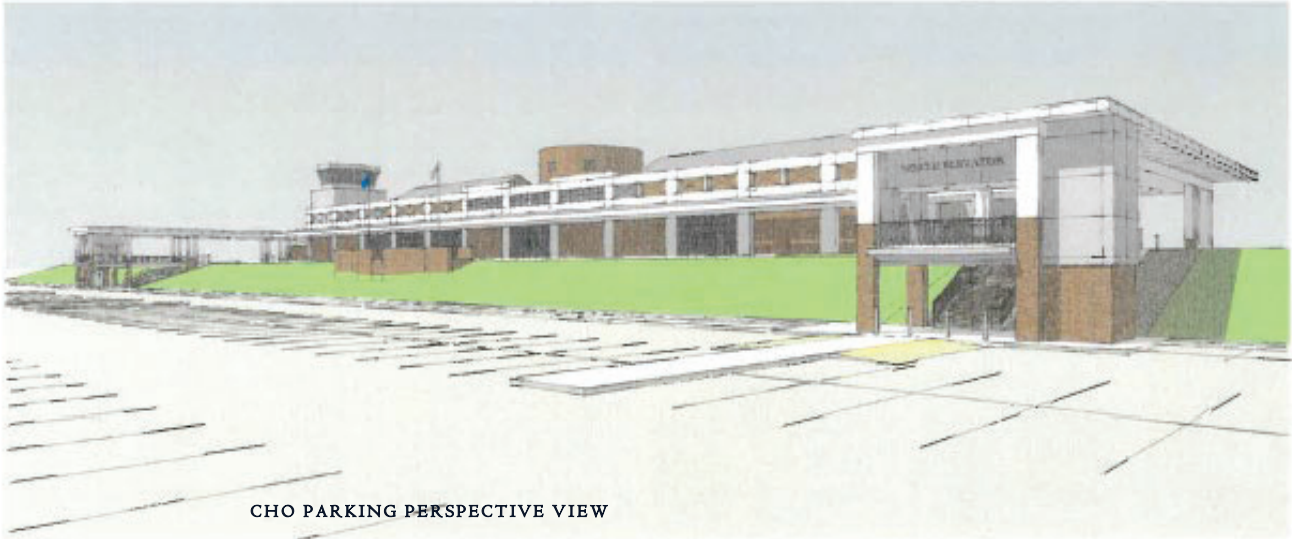


CHO's Recently Completed Projects!



- Relocate Taxiway Echo
\$2.6 million
- Air Carrier Apron Expansion
\$9.7 million

Ongoing Projects at CHO



CHO PARKING PERSPECTIVE VIEW




Parking Elevators and Covered Walkways Project

As of June 7, 2022



NORTH ELEVATOR AND CROSSWALK



SOUTH ELEVATOR AND CROSSWALK




Parking Elevators and Covered Walkways Project

As of July 2022

Checking in with CHO | September 2022

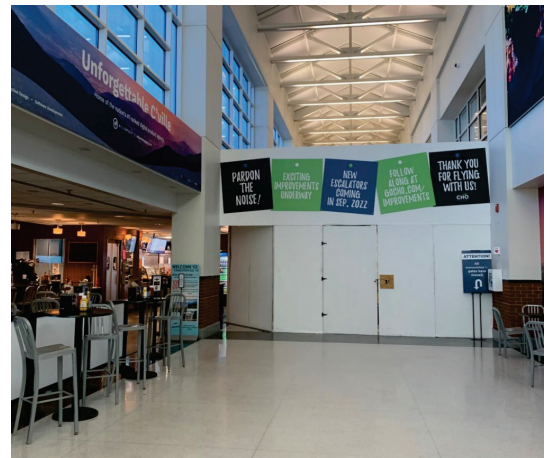



CHO's Escalator Project –

The Gate 5 Area Closes and the Wall Goes Up!

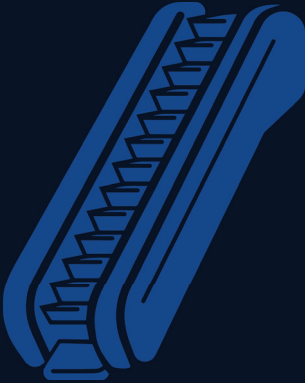


Checking in with CHO | September 2022

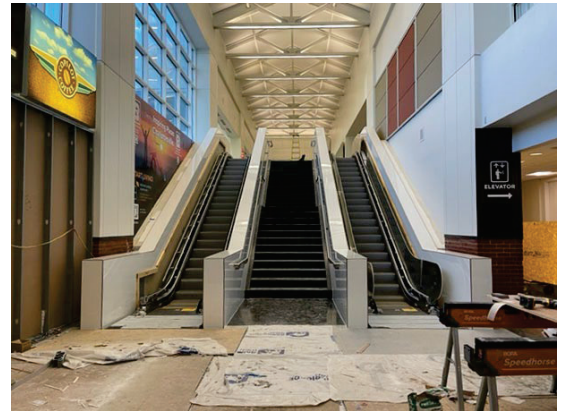
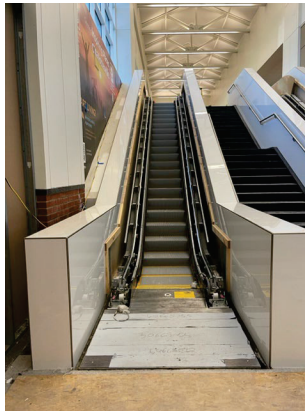
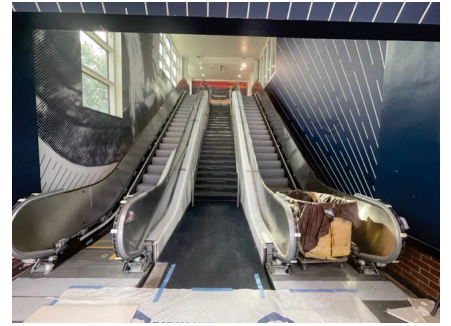
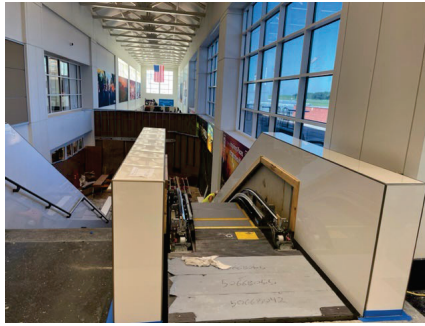




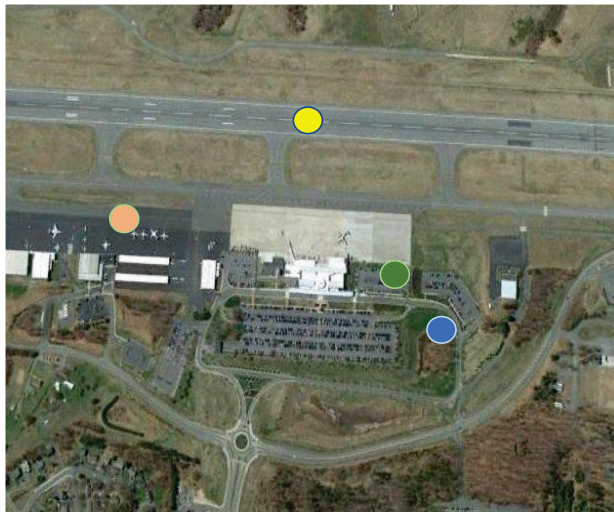
CHO's Escalator Project — the Work Continues



Checking in with CHO | September 2022



Other On-going & Future Projects at CHO!



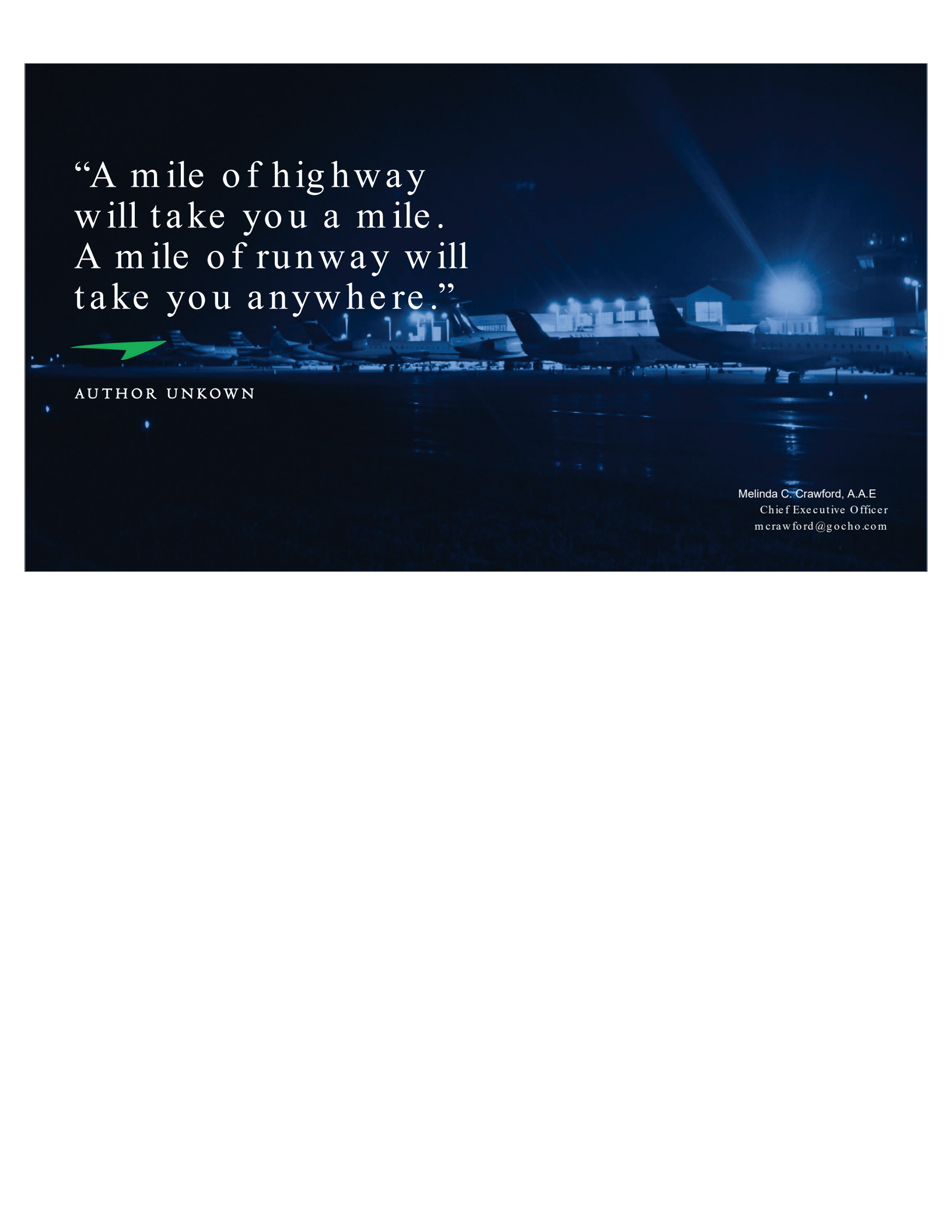
On-Going Project: Terminal Area Plan Development

● Future Sustainability Project: Conversion of All Airfield Lighting & Signage to LED
\$ 4.4 million

● Future: Terminal Expansion Project

● Future: Construction of Multi-Level Parking Structure

● Future: General Aviation Improvements



“A mile of highway
will take you a mile.
A mile of runway will
take you anywhere.”



AUTHOR UNKNOWN

Melinda C. Crawford, A.A.E
Chief Executive Officer
mcrawford@gocho.com