

**CITY OF CHARLOTTESVILLE, VIRGINIA
CITY COUNCIL AGENDA**



Agenda Date:	March 15, 2021
Action Required:	No actions required
Presenter:	Hezedean A. Smith, Fire Chief (Intro); Deputy Chief Powers (Presenter)
Staff Contacts:	Deputy Chief Joe Powers
Title:	Charlottesville Fire Department's Community Risk Reduction Initiatives

Background:

In January 2020, the Charlottesville Fire Department expanded its scope to include an intentional focus on Community Risk Reduction or CRR. Based on risk assessments, data, and outcomes, CRR is a wholesale change from traditional fire service practices. Since January, the CRR efforts in Charlottesville gained regional and national attention within the fire service industry. The presentation provides insight regarding the background of CRR and how the department's efforts and realignment are positively impacting the community.

Discussion:

Deputy Chief Powers will discuss the PowerPoint presentation

Alignment with City Council's Vision and Strategic Plan:

This presentation on Community Risk Reduction exemplifies the fire department's efforts to create efficiency in service delivery, match resources with community needs, and understand better the differences with the city's neighborhoods.

Community Engagement:

Community Risk Reduction within the Charlottesville Fire Department focuses on strategic public engagement through community partnerships. The presentation will outline examples of community outcomes achieved through strategic engagement.

Budgetary Impact:

The model of Community Risk Reduction drives efficiency in service delivery and decreases workload. There is no direct fiscal impact or request for additional resources. However, the presentation outlines the measures the Charlottesville Fire Department takes to improve stewardship of city funds. As the department seeks to solidify its approach to a comprehensive

CRR process, there may be future needs and support necessary to support execution of the vision.

Recommendation:

N/A

Alternatives:

N/A

Attachments:

PowerPoint

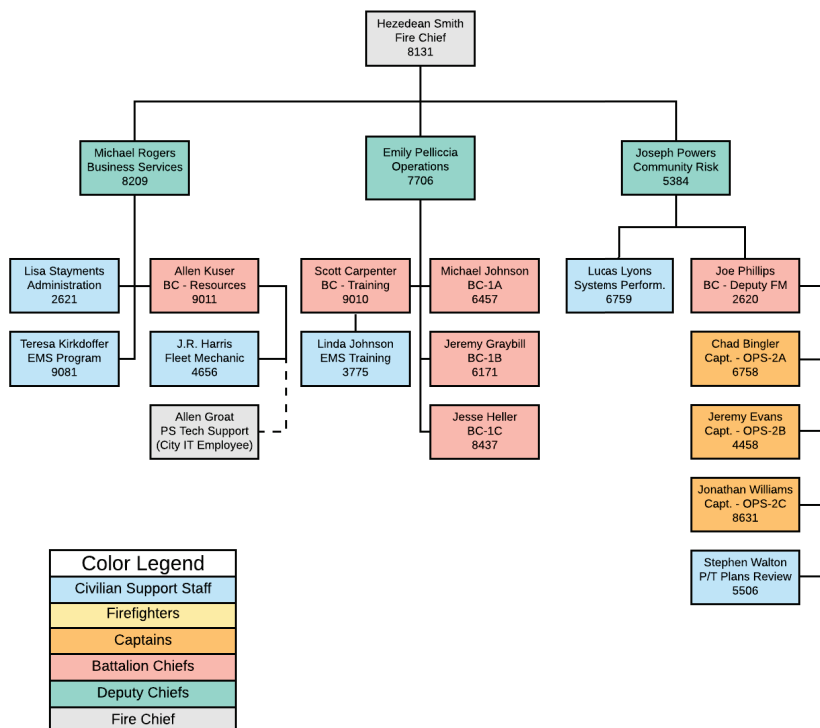


COMMUNITY RISK REDUCTION

Charlottesville Fire Department



Administration



NEIGHBORHOOD RISK ASSESSMENT	PUBLIC INFORMATION OFFICER	STRATEGIC PLAN
PERFORMANCE ANALYSIS	FIRE DEPARTMENT ACCREDITATION	FREQUENT 911 UTILIZERS
FIRE MARSHAL'S OFFICE	ISO RATING	SELF-ASSESSMENT MODEL

WHAT IS COMMUNITY RISK REDUCTION?

COMMUNITY RISK REDUCTION

Fire Prevention



**Community Risk
Reduction**

MINDSET CHANGE

PROCESS vs SECTION

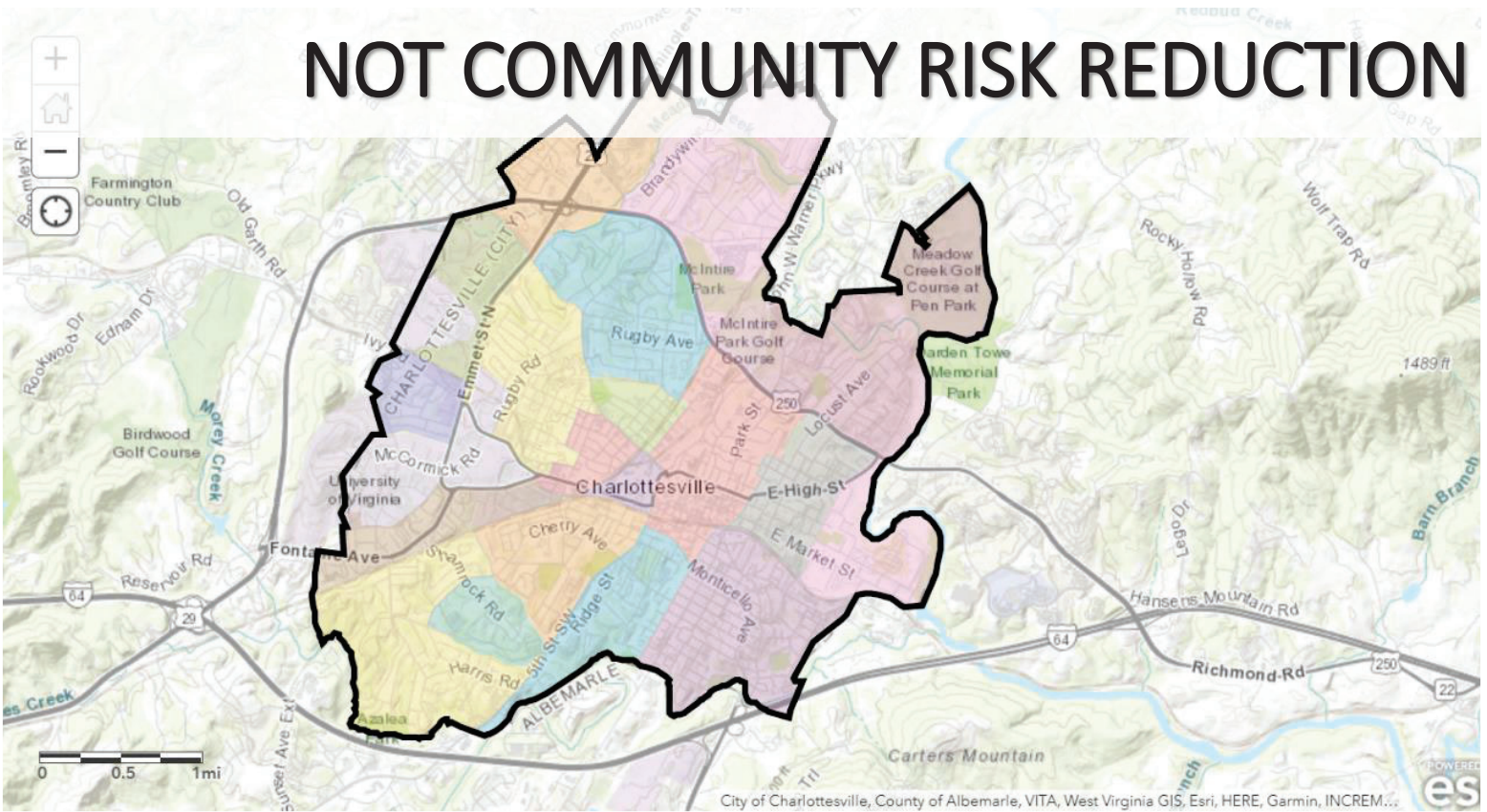
VISION 20/20

COMMUNITY RISK REDUCTION

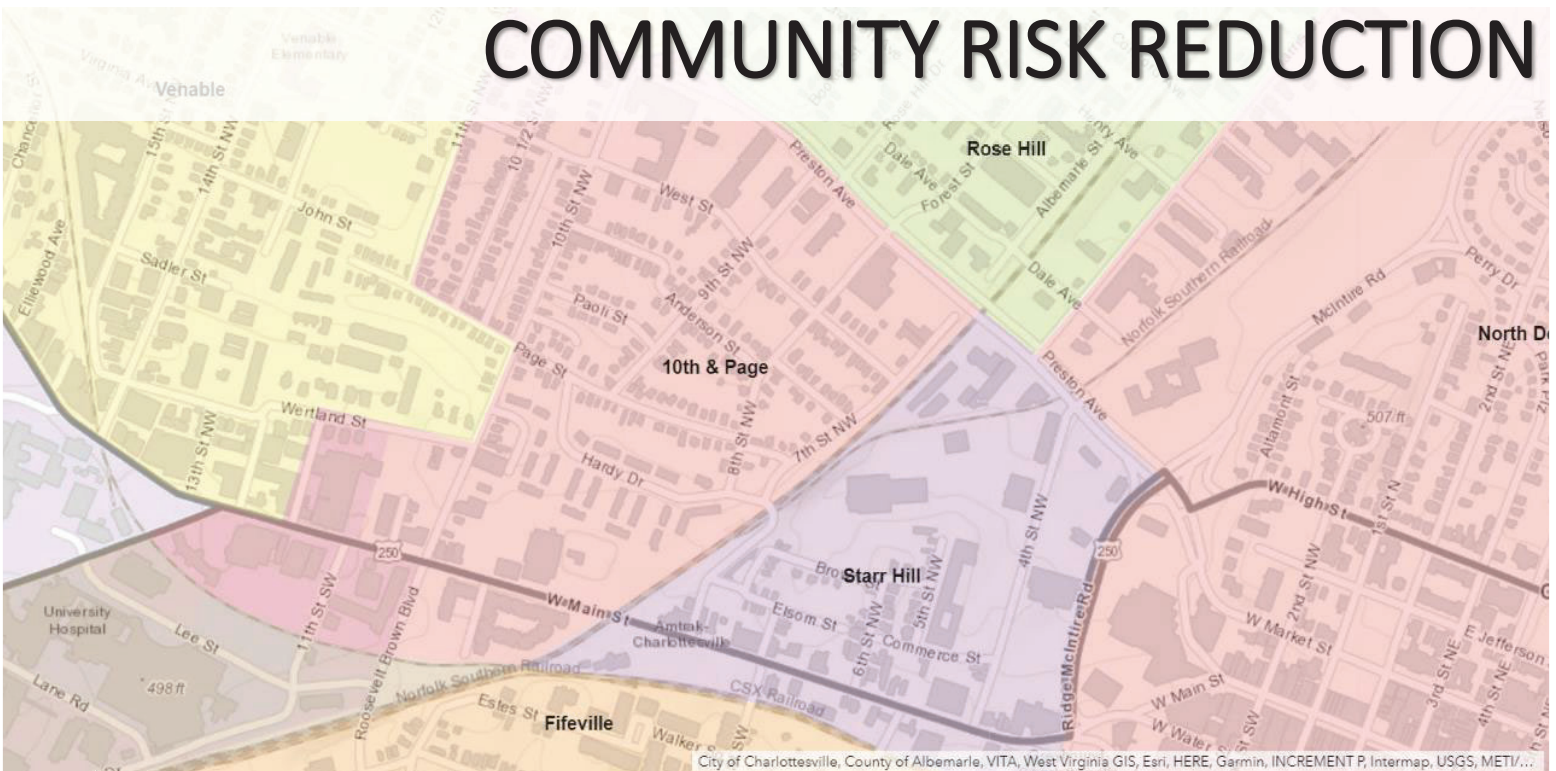
Risk Assessment
Prioritization
Resource Coordination
Mitigation
Evaluation



NOT COMMUNITY RISK REDUCTION

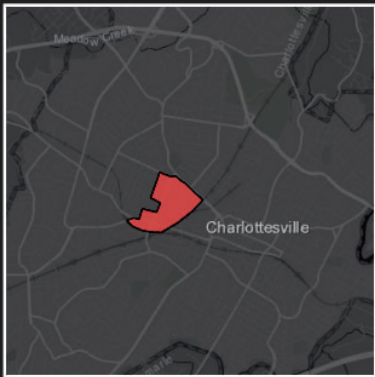


COMMUNITY RISK REDUCTION



NEIGHBORHOOD RISK ASSESSMENT | Community Profile

10th & Page



1,583 Population 2.66 Avg Size Household 594 Households 30.5 Median Age \$35,137 Median Household Income \$234,444 Median Home Value 87 Housing Affordability 74% Internet at Home

POPULATION AND BUSINESSES

1,878 Daytime Population 87 Total Businesses 1,845 Total Employees

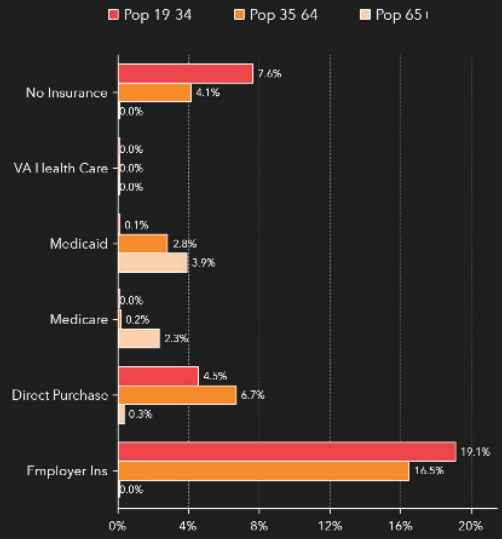
POVERTY

204 Households Below the Poverty Level 156 Households Receiving Food Stamps/SNAP

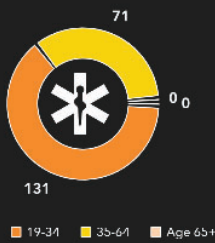
AT RISK POPULATION

125 Households With Disability 198 Population 65+ 192 Households Without Vehicle

HEALTH INSURANCE COVERAGE (ACS)



POPULATION NO HEALTH INSURANCE (ACS)



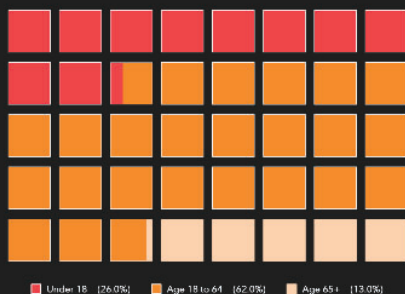
Source: Esri forecasts for 2020, U.S. Census Bureau 2014-2018 American Community Survey (ACS) Data, Businesses counts from InfoGroup

Note: Medicaid values for populations 65+ is defined as Medicaid plus Medicare. For other age groups it is Medicaid only. Source 2014-2018 American Community Survey (ACS) Data.

LANGUAGE (ACS)

Language	Age 5-17	18-64	Age 65+	Total
English Only	76	836	236	1,148
Spanish	0	96	0	96
Spanish & English Well	0	96	0	96
Spanish & English Not Well	0	0	0	0
Indo-European	0	68	0	68
Indo-European & English Well	0	7	0	7
Indo-Euro & English Not Well	0	61	0	61
Asian-Pacific Island	60	98	0	158
Asian-Pacific Isl & English Well	60	39	0	99
Asian-Pacific Isl & English Not Well	0	59	0	59
Other Language	20	46	0	66
Other language & English Well	20	46	0	66
Other Lang. & English Not Well	0	0	0	0

POPULATION BY AGE



KEY INDICATORS: PLANNING

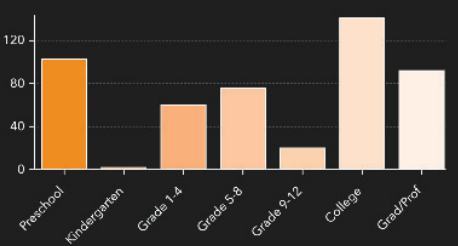
10th & Page

1,583 Population 2.66 Avg Size Household 594 Households 30.5 Median Age \$35,137 Median Household Income \$234,444 Median Home Value 87 Housing Affordability 74% Internet at Home

POPULATION AND POVERTY STATUS (ACS)

Income to Poverty Ratio	Total
Population for whom Poverty Status is Determined	1,717
Income to Poverty Ratio <0.50	477
Income to Poverty Ratio 0.50-0.99	298
Income to Poverty Ratio 1.00-1.24	55
Income to Poverty Ratio 1.25-1.49	68
Income to Poverty Ratio 1.50-1.84	86
Income to Poverty Ratio 1.85-1.99	0
Income to Poverty Ratio 2.00+	788

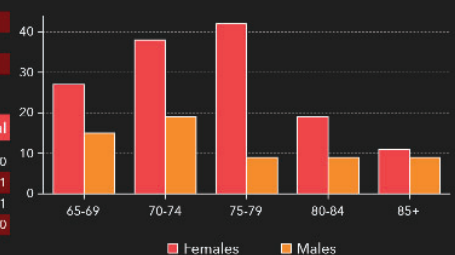
SCHOOL ENROLLMENT (ACS)



POVERTY LEVELS (ACS)

Category	Below	Above	Total
Total	204	409	613
Married Couple Families	57	88	145
Other Families w/Male Householder	61	14	75
Other Families w/Female Householder	0	23	23
Nonfamilies w/Male Householder	37	75	112
Nonfamilies w/Female Householder	49	209	258

SENIOR POPULATION



NO HEALTH INSURANCE COVERAGE (ACS) %

Age Group	(ACS) %	Total
Population <19	0.0%	0
Population Age 19-34	7.6%	131
Population Age 35-64	4.1%	71
Population Age 65+	0.0%	0



Source: Esri forecasts for 2020, U.S. Census Bureau 2014-2018 American Community Survey (ACS) Data, Businesses counts from InfoGroup

Version 1.10
March 24, 2020

COMMUNITY RISK REDUCTION

Population:

- 10,825: Daytime Pop. Density
 - +295 or 18.6%: Daytime Population Shift
- 9,125: Nighttime Pop. Density

Housing Units:

- 56.3%: Renter Occupied
- 5.6% Vacant



COMMUNITY RISK REDUCTION

KEY PLANNING INDICATORS

- 3rd Lowest Median Household Income (Citywide: \$51,332)
- 2nd Highest Density of Families (5,828/sq. mile)
- Of the 594 Households, 34% are Below the Poverty Level
- 35%: Population without a Smartphone

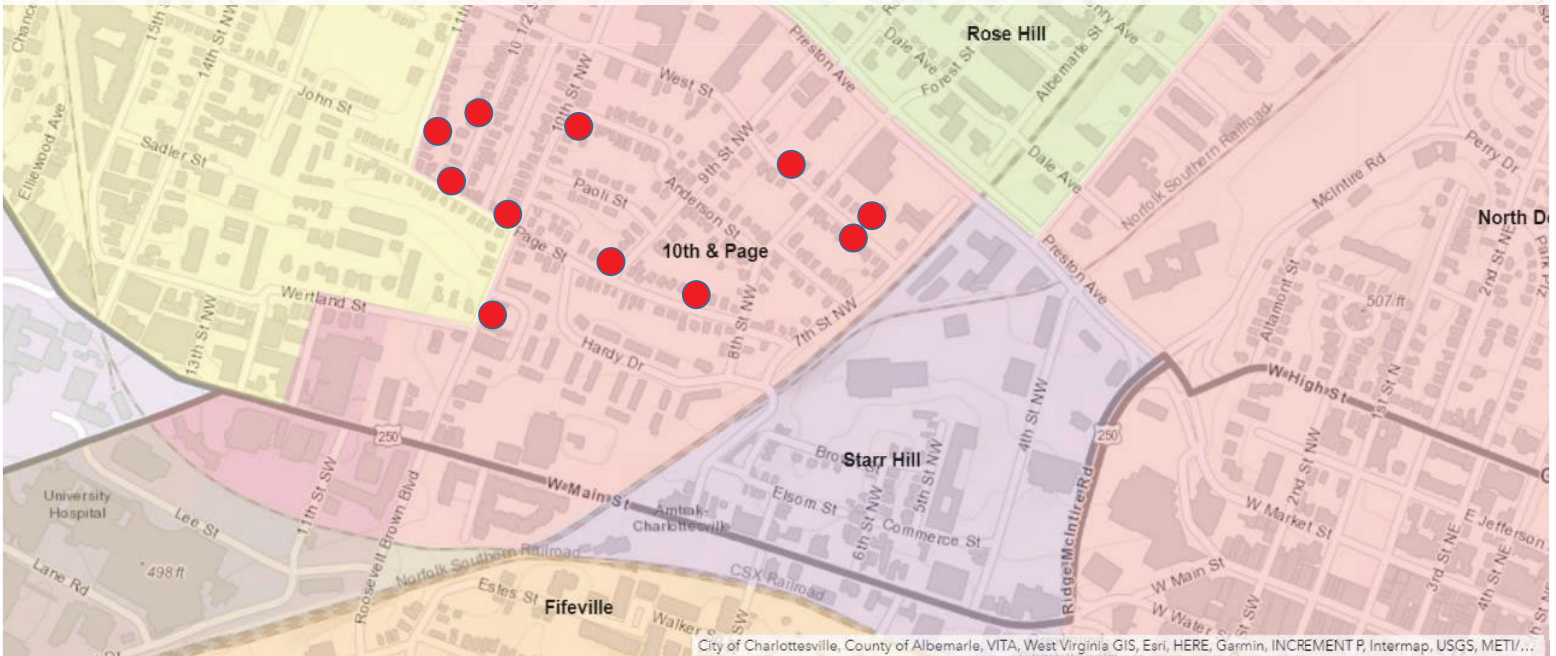
Incident Response:

- 3rd Highest Structure Fire Risk (0.07/person)

Crime:

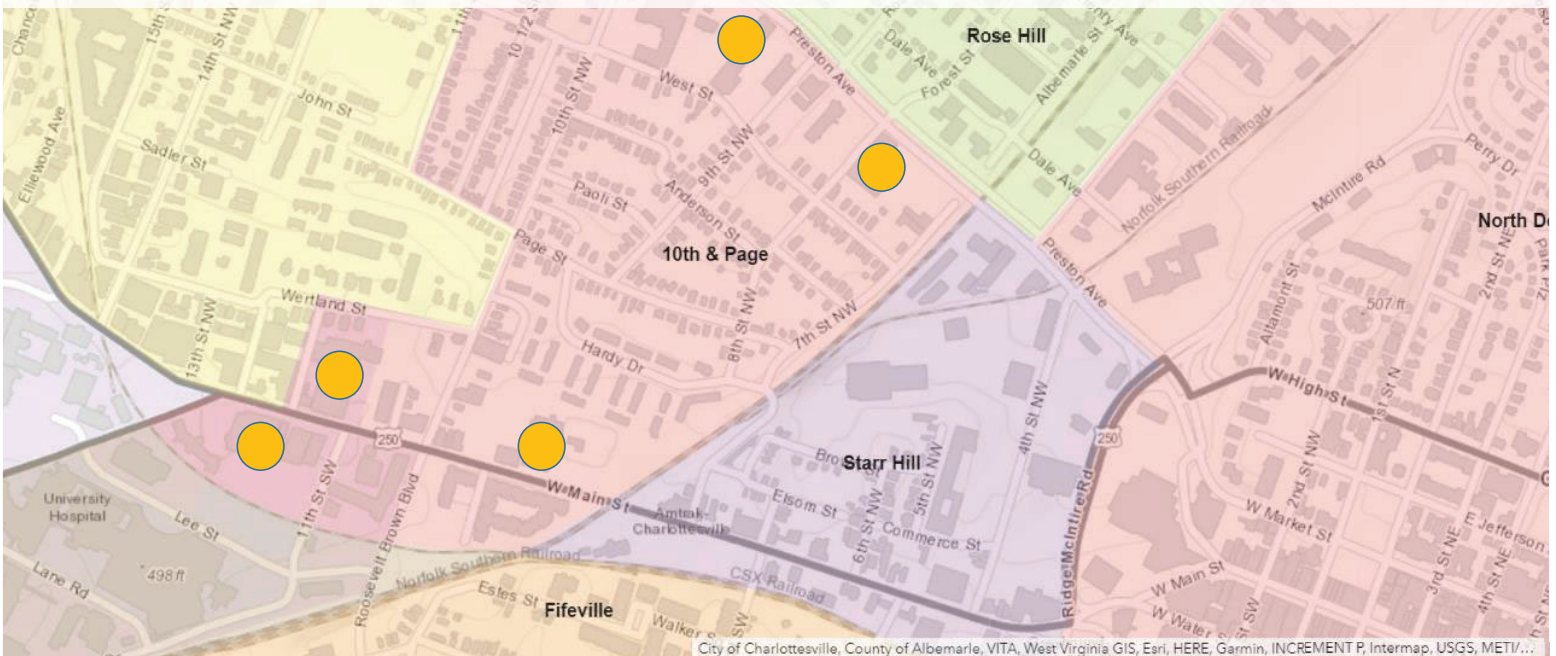
- Total Crime 47% Above National Average
- Highest Murder Index City-wide
- Personal Crime 76% Above National Average
- Property Crime 42% Above National Average

COMMUNITY RISK REDUCTION



Example Only

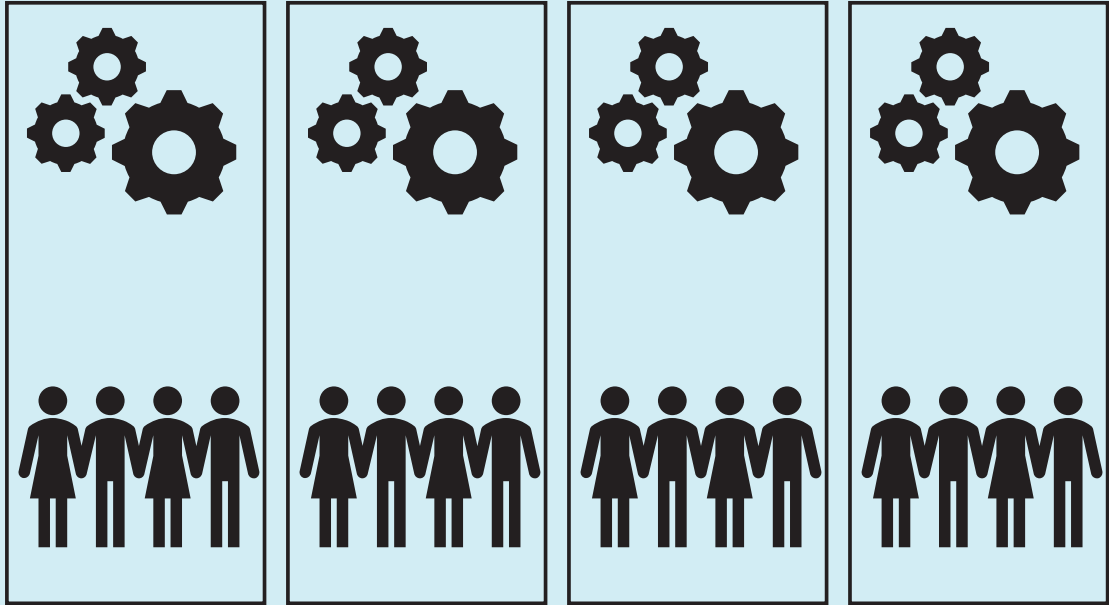
COMMUNITY RISK REDUCTION



Example Only

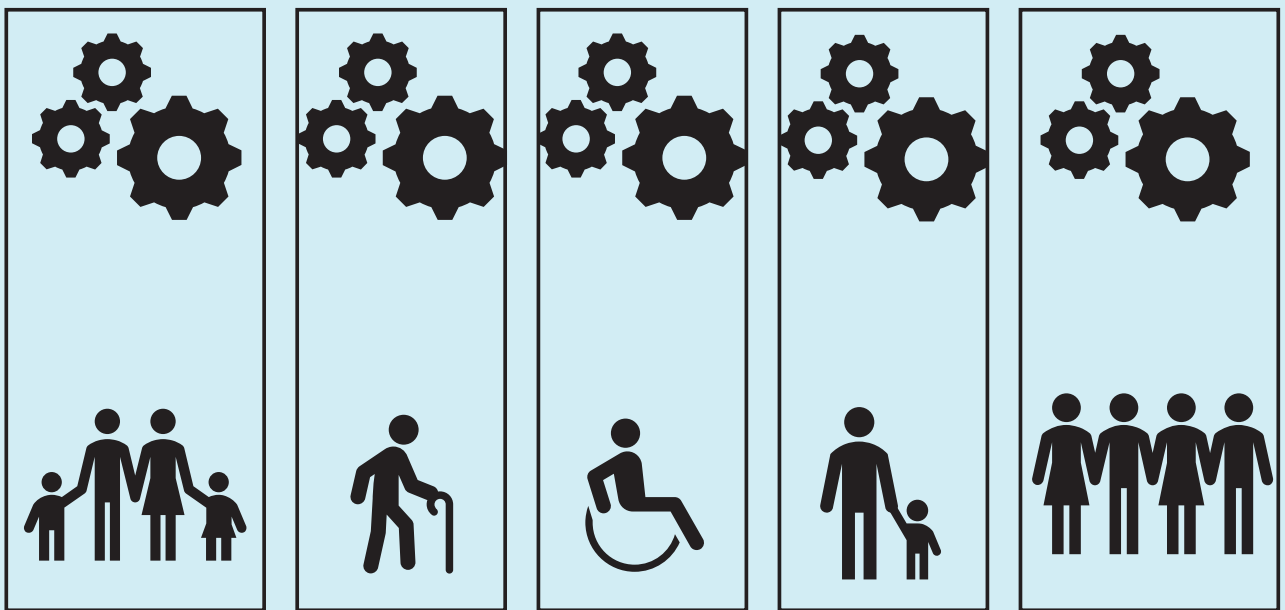
**COMMUNITY ASSESSMENT
FOR RISK REDUCTION**

**COMMUNITY-LEVEL
PROGRAM DEVELOPMENT**



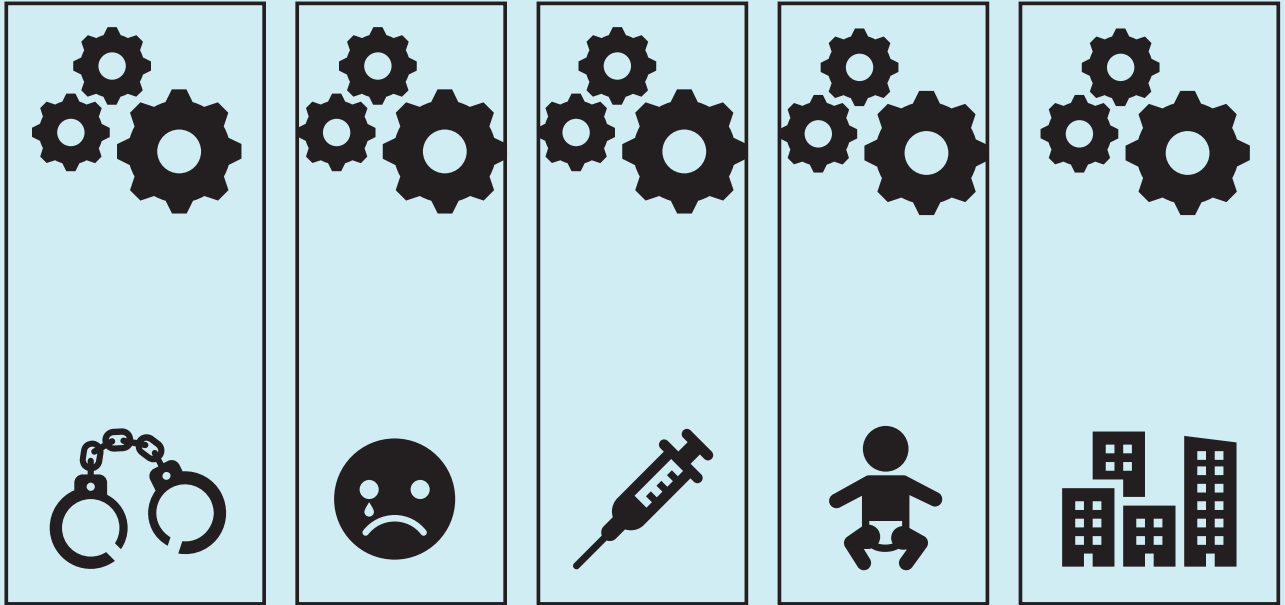
**COMMUNITY ASSESSMENT
FOR RISK REDUCTION**

POPULATIONS IN COMMUNITIES

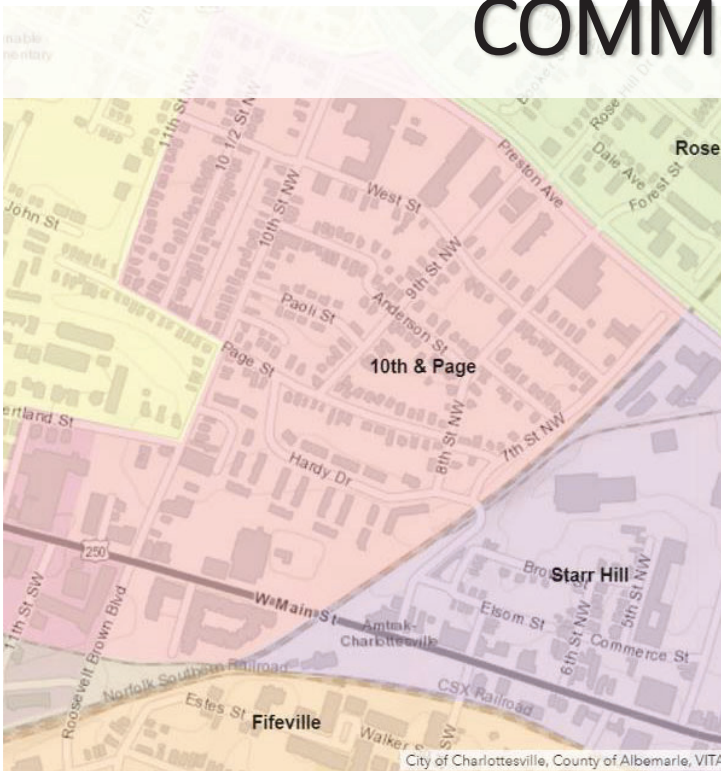


COMMUNITY ASSESSMENT FOR RISK REDUCTION

CHARACTERISTICS OF POPULATIONS WITHIN COMMUNITIES



COMMUNITY RISK REDUCTION



ENGAGEMENT FOCUS:

- Hands-Only CPR
- Smoke Detectors
- Space Heater Safety
- Pedestrian & Street Crossing

TIMING:

- 11:00 AM – 1:30 PM

DELIVERY:

- Door Knocks
- Direct Mail
- Community Integration

Example Only



Neighborhood Risk Assessment

The Charlottesville Fire Dept.'s Neighborhood Risk Assessment provides the framework for community-matched service and program delivery.

Joe Powers | December 29, 2020

THE CITY AREA CHARACTERISTICS THE DEPT. NEIGHBORHOODS: 10TH & PAGE BARRACKS-RUGBY BARRACKS ROAD BELMONT FIFEVILLE FRY'S SPRING GREEN



Neighborhood Risk Assessment



THE CITY AREA CHARACTERISTICS THE DEPT. NEIGHBORHOODS: 10TH & PAGE BARRACKS-RUGBY BARRACKS ROAD BELMONT FIFEVILLE FRY'S SPRING GREEN

THE DEPT.

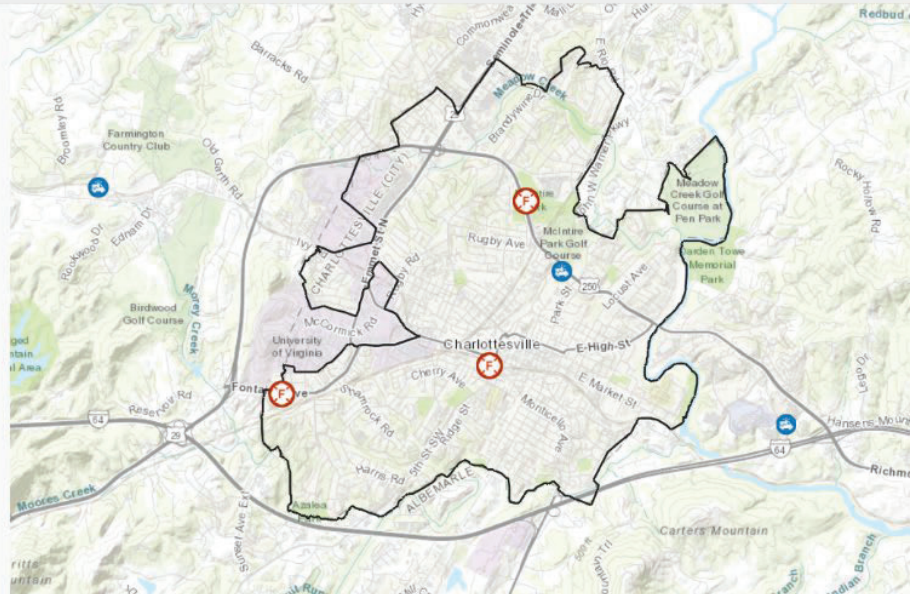
Fire

The Charlottesville Fire Department provides fire protection, emergency response, and fire safety education to the City of...

<https://www.charlottesville.gov>



The Charlottesville Fire Department provides fire and other emergency services to residents and visitors to the City of Charlottesville and the University of Virginia. The department also provides contractual fire and emergency services support to the County of Albemarle.



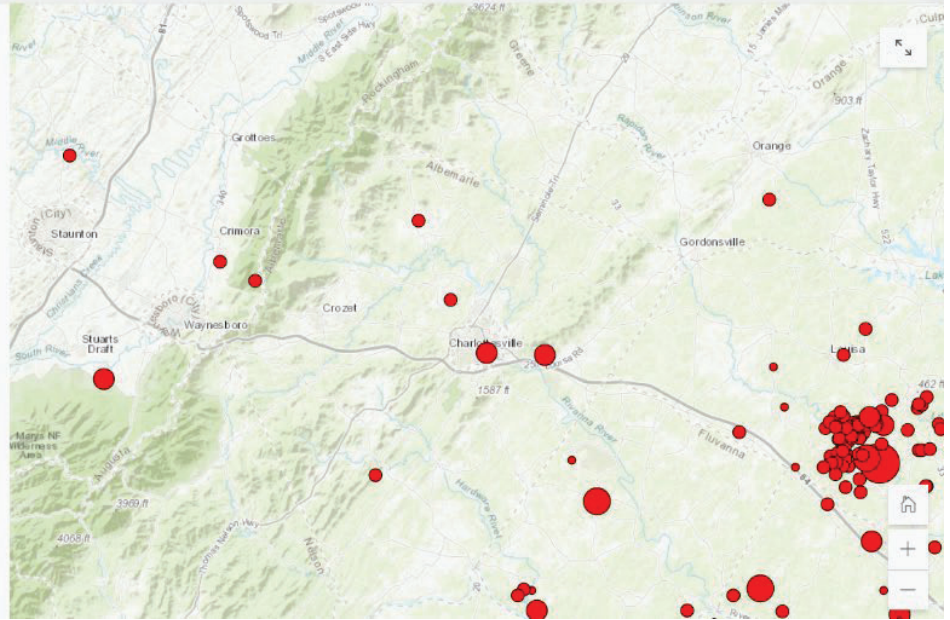


Tornadoes have a 27 percent chance of occurring in Central Virginia. Even though the chance is small, tornadoes are still possible. July is the most active month for tornadoes in Virginia. A total of 22 historical tornado events that were the magnitude of two or greater were recorded in or near Charlottesville between 1950 and 2020.

Historical Tornado Data

Earthquakes are rare in the Mid-Atlantic region, but a magnitude 3.2 earthquake occurred just north of Charlottesville in 2001. Nearby Mineral (in Louisa County) was the epicenter of a 5.8-magnitude earthquake on August 23, 2011.

Historical Earthquake Data

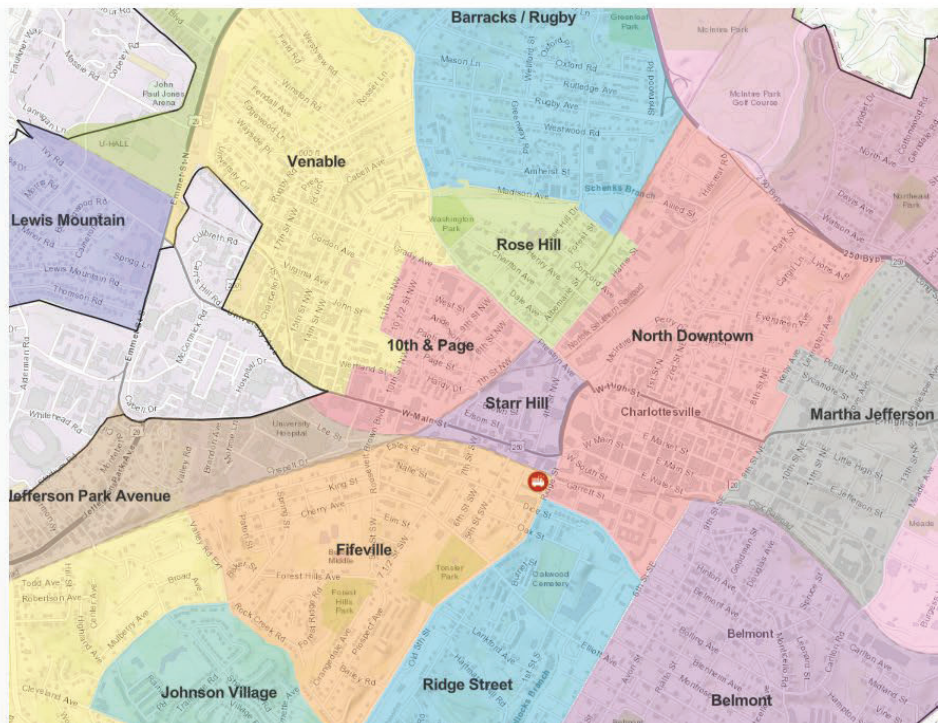


NORTH DOWNTOWN

North Downtown is a city-designated neighborhood extending from McIntire Park south, down Park Street. The neighborhood includes the Charlottesville-Albemarle County Courthouse District. North Downtown is listed as a historic district on the National Register of Historic Places and the Virginia Landmarks Register. At the center of the North Downtown neighborhood is historic Court Square, the oldest portion of the City of Charlottesville. Settled around the Albemarle County Courthouse, some of the buildings date to the early 1800's. Court Square was the first commercial center.

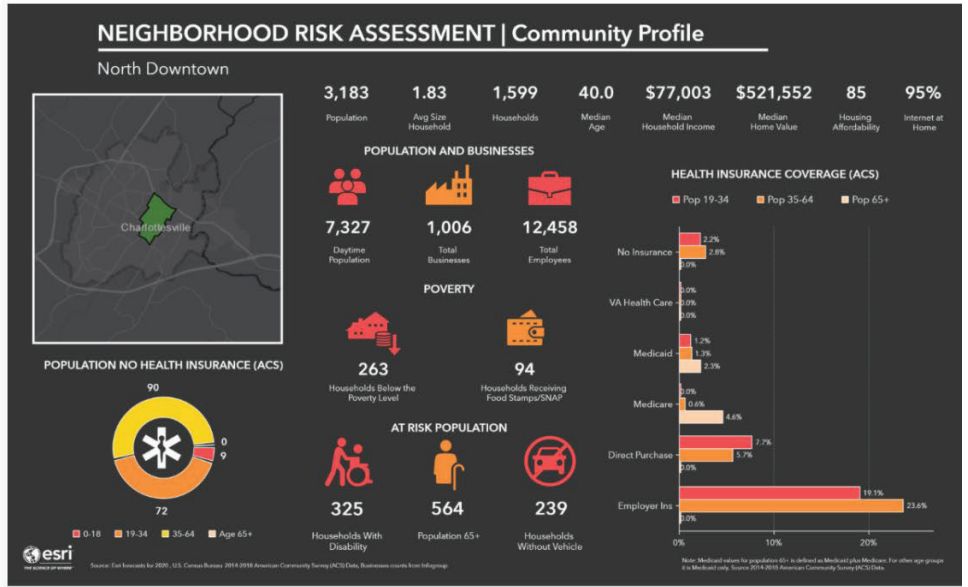
As this neighborhood lies in the heart of Charlottesville, it also contains City Hall, the County Office Building, and all Courts: Federal, City and County Circuit Courts, City and County District Courts, and Juvenile Court. There is a large art gallery (McGuffey Arts Center, a historic building), the main library, the Historical Society a USPS post office branch, the Downtown Transit Center, several churches including the only synagogue, a Catholic Church, the only Greek Orthodox Church and several entertainment venues including a restored historic theater. The central piece after our historic properties is the Downtown Mall.

The neighborhood is pedestrian-oriented, as residents walk to the above venues.



Community Profile:

- 0.67 sq. miles
- Population:**
 - 10,935: Daytime Population Density (sq. mile)
 - +4,144 or 130.2%: Daytime Population Shift
 - 4,751: Nighttime Population Density (sq. mile)
- Housing Units:**
 - 40.7%: Owner Occupied
 - 49.6%: Renter Occupied
 - 9.7% Vacant



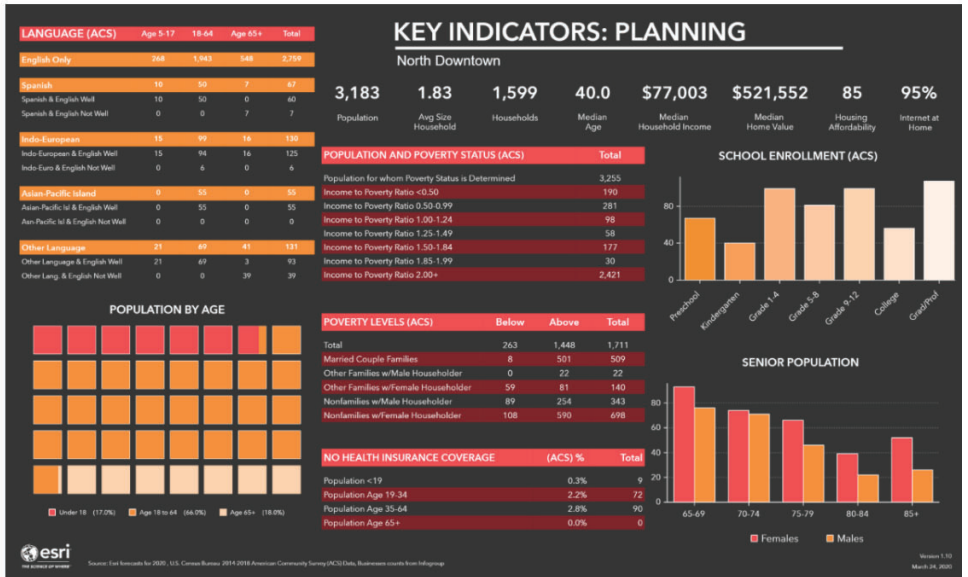
- 2nd Highest Density of Vacant Homes | 332.8 per sq. mile
- 3rd Highest Rate of Vacant Housing Units
- 3rd Highest Daytime Pop. Density

Incident Response Rankings:

- 2nd: Dispatched Falls | 367.2 per sq. mile
- 2nd: Service Calls | 60.3 per 1,000
- 2nd: Illicit Drug Use | 25.5 per 1,000
- 2nd: Alcohol Intoxication | 877.6 per sq. mile & 184.7 per 1,000
- 2nd: Heat-Related Emergency | 23.9 per sq. mile
- 2nd: Cooking Fire Incidents | 11
- Lower Density of Cooking Fires | 3.5 per 1,000
- 3rd: Seizures | 58.8 per 1,000 & all measures
- 3rd: Illicit Drug Use | 120.9 per sq. mile
- 3rd: Vehicle vs. Pedestrian Crashes | 8.8 per 1,000
- 3rd: Asthma | 5.0 per 1,000
- 3rd: Behavioral Emergencies | 373.1 per sq. mile

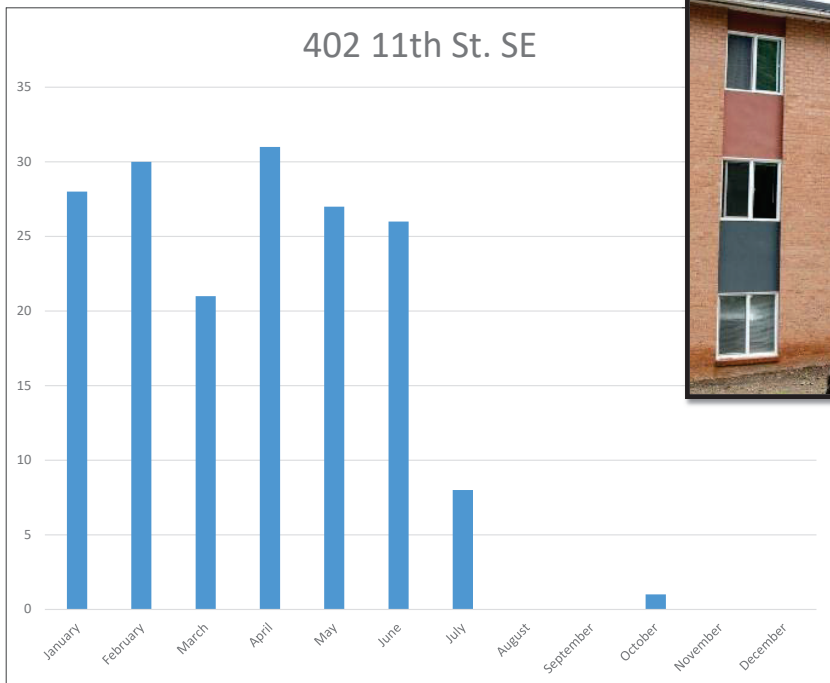
Considerations:

- High Prevalence of Homelessness

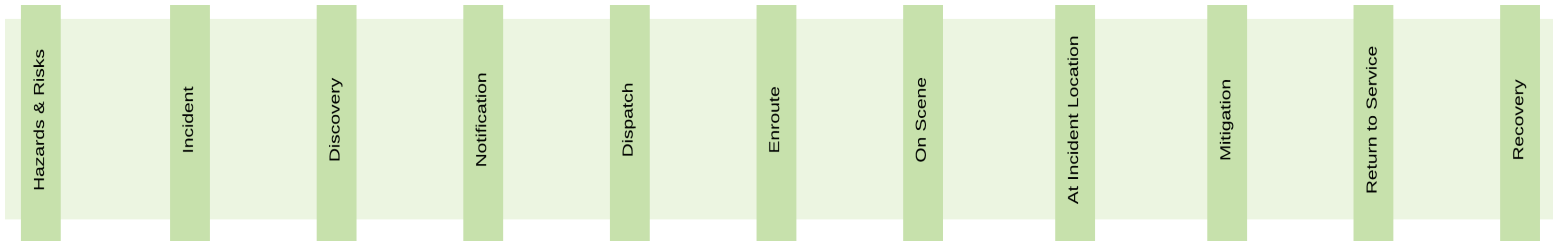


COMMUNITY RISK REDUCTION

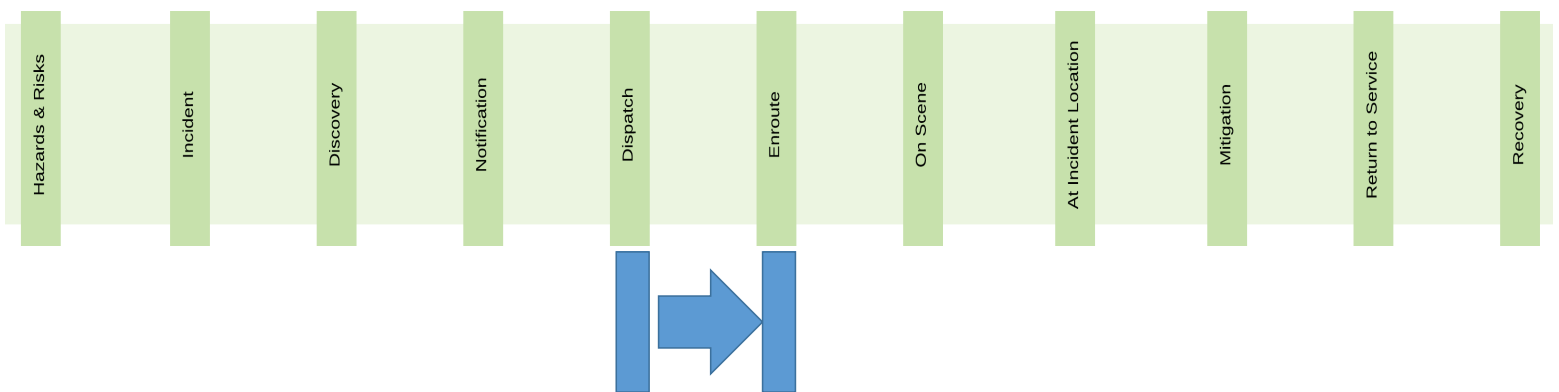
Partners in Charlottesville



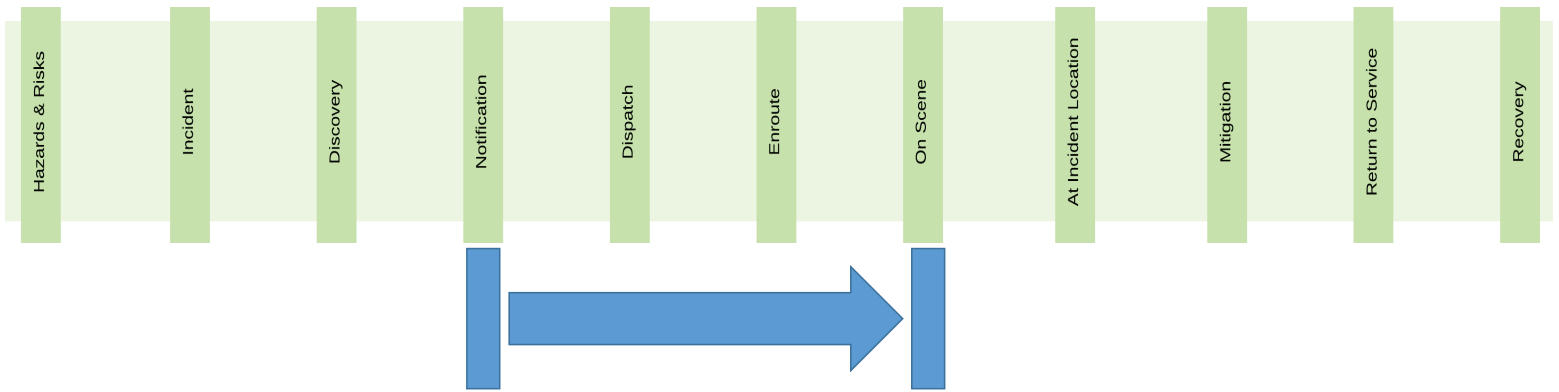
What is Community Risk Reduction?



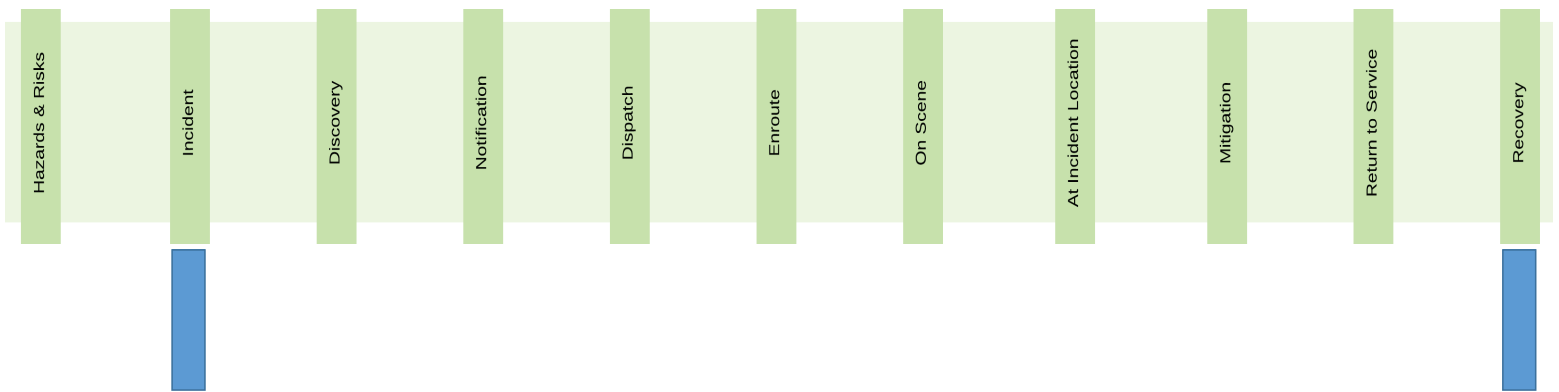
What is Community Risk Reduction?



What is Community Risk Reduction?

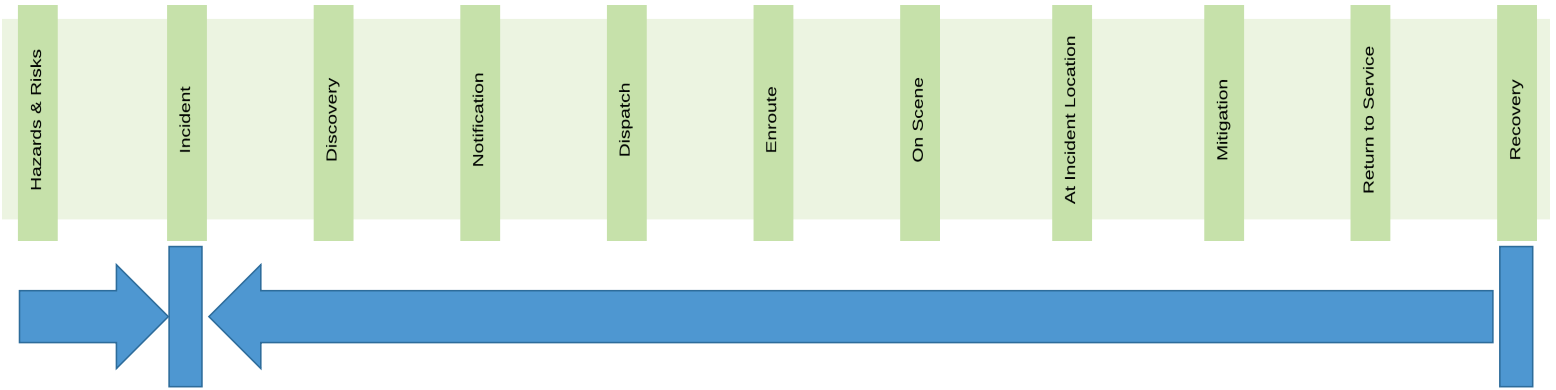


What is Community Risk Reduction?

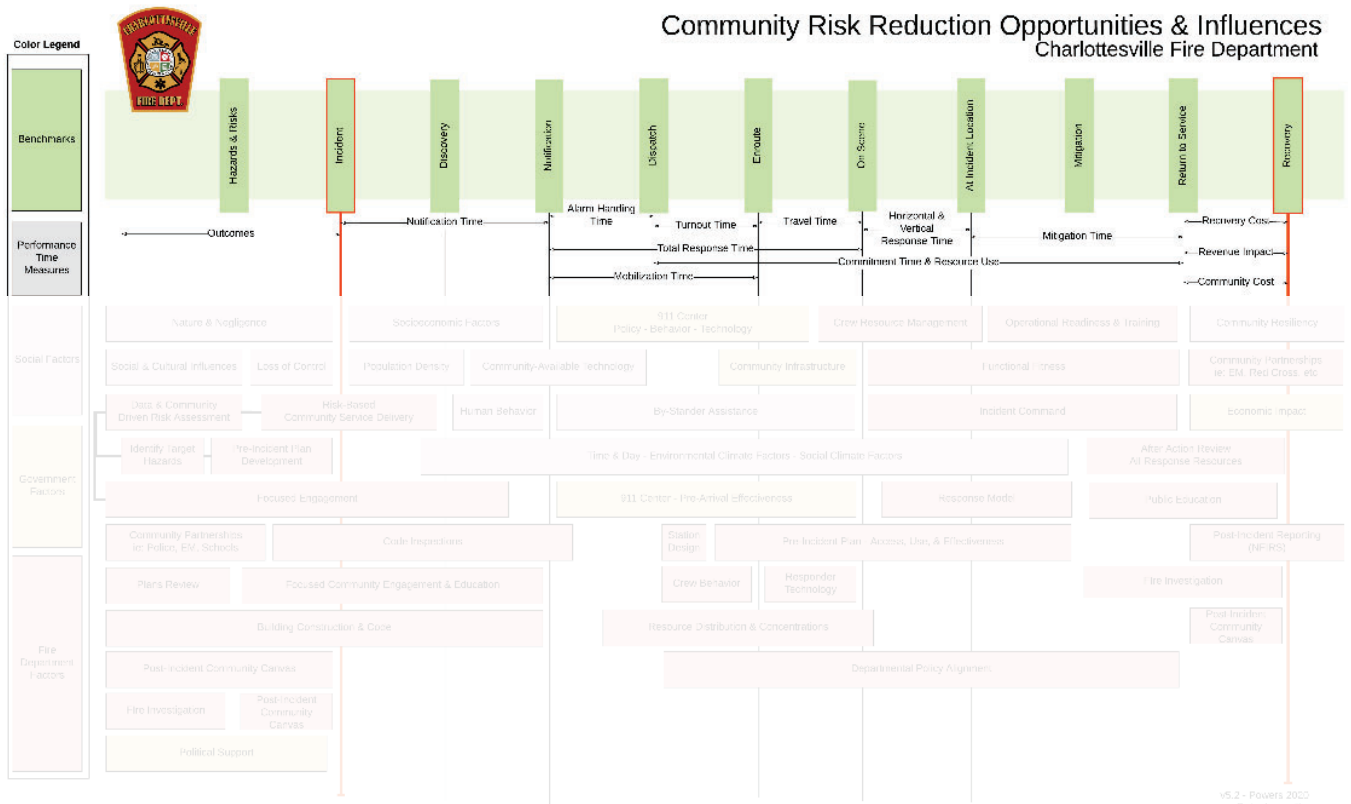


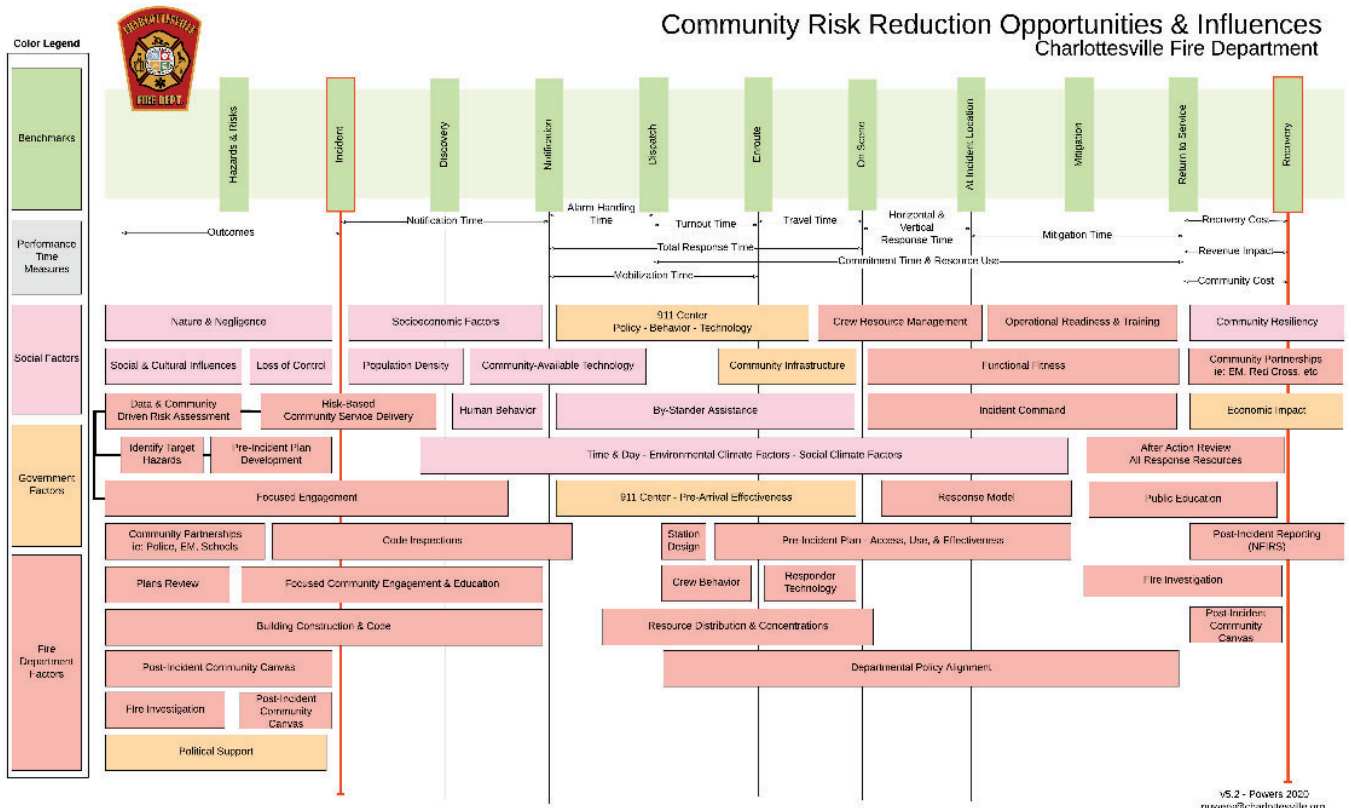
TWO COMMUNITY BENCHMARKS

What is Community Risk Reduction?



TWO COMMUNITY BENCHMARKS





Joe Powers
Deputy Fire Chief
Charlottesville Fire Department



804-517-0564

powers@charlottesville.gov